
Table of Contents

1. DESCRIPTION.....	1
1.1. STANDARD CAB, EXTENDED CAB AND CREW CAB.....	1
1.2. VEHICLE IDENTIFICATION NUMBER (VIN) TAG LOCATION.....	3
1.3. ELECTRIC WINDSHIELD WIPERS.....	4
1.4. WINDSHIELD WASHER.....	5
2. OPERATION.....	6
2.1. ELECTRIC WINDSHIELD WIPERS.....	6
2.2. WINDSHIELD WASHER.....	7
3. MAINTENANCE.....	7
3.1. WINDSHIELD WASHER.....	7
4. REMOVE.....	7
4.1. ONE PIECE ENCAPSULATED WINDSHIELD.....	7
Remove One Piece Encapsulated Windshield.....	7
4.2. REAR WINDOW GLASS ON VEHICLES WITHOUT VAN BODY.....	13
Remove Rear Window Glass on Vehicles without Van Body.....	13
4.3. REAR WINDOW GLASS ON VEHICLES WITH VAN BODY.....	16
Remove Rear Window Glass on Vehicles with Van Body.....	16
4.4. HOOD SEAL.....	25
Remove Hood Seal.....	25
4.5. SUN SHADE.....	26
Remove Sun Shade.....	26
4.6. SUN VISOR AND CLIP.....	27
Remove Sun Visor and Clip.....	27
4.7. IGNITION SWITCH AND IGNITION SWITCH CYLINDER.....	28
Remove Ignition Switch.....	29
Remove Ignition Switch Cylinder.....	31
4.8. INSTRUMENT PANEL.....	33
Remove Instrument Panel.....	33
4.9. CAB DOORS.....	37
Remove Front Cab Door.....	37
Remove Rear Cab Door on Crew Cab.....	41
4.10. CAB DOOR HINGE.....	46
Remove Front Cab Door Hinge.....	46
Remove Rear Cab Door Hinge on Crew Cab.....	47
4.11. CAB DOOR STRIKER PIN.....	49
Remove Front Cab Door Striker Pin.....	49
Remove Rear Cab Door Striker Pin on Crew Cab.....	50
4.12. CAB DOOR CHECK BRACKET.....	51
Remove Front Cab Door Check Bracket.....	51
Remove Crew Cab Rear Door Check Bracket on Crew Cab.....	52
4.13. CAB DOOR CHECK LINK.....	52
Remove Front Cab Door Check Link.....	52
Remove Rear Door Check Link on Crew Cab.....	53
4.14. CAB DOOR TRIM PANEL.....	55

Remove Front Cab Door Trim Panel with Electric Door Window and Locks.....	55
Remove Front Cab Door Trim Panel with Manual Door Window and Locks.....	57
Remove Crew Cab Rear Cab Door Trim Panel with Electric Door Window and Locks on Crew Cab.....	59
Remove Crew Cab Rear Cab Door Trim Panel with Manual Door Window and Locks on Crew Cab.....	61
4.15. CAB DOOR INNER DOOR PANEL WATER SHIELD.....	63
Remove Front Cab Door Inner Panel Water Shield.....	63
Remove Rear Cab Door Inner Panel Water Shield on Crew Cab.....	65
4.16. CAB DOOR WINDOW SLIDE BLOCK.....	66
Remove Front Cab Door Window Slide Block.....	66
Remove Rear Cab Door Window Slide Block on Crew Cab.....	67
4.17. CAB DOOR GLASS.....	69
Remove Front Cab Door Glass.....	69
Remove Rear Cab Door Glass on Crew Cab.....	73
4.18. MODULAR DOOR HARDWARE ASSEMBLY.....	77
Remove Front Cab Door Modular Door Hardware Assembly.....	77
Remove Rear Cab Door Modular Door Hardware Assembly on Crew Cab.....	81
4.19. CAB DOOR VENT WINDOW.....	83
Remove Front Cab Door Vent Window.....	83
4.20. CAB DOOR VENT WINDOW HINGE.....	85
Remove Front Cab Door Vent Window Hinge.....	85
4.21. CAB DOOR VENT WINDOW SEAL.....	87
Remove Front Cab Door Vent Window Seal.....	87
4.22. CAB DOOR LOCK CYLINDER.....	87
Remove Cab Door Lock Cylinder on Front Cab Door of Standard Cab or Extended Cab Models and on Front and Rear Cab Doors of Crew Cab Models.....	87
4.23. CAB DOOR WINDOW ELECTRIC MOTOR.....	89
Remove Front Cab Door Window Electric Motor.....	89
Remove Rear Cab Door Window Electric Motor on Crew Cab.....	90
4.24. CAB DOOR WINDOW REGULATOR ARM ASSEMBLY.....	91
Remove Front Cab Door Window Regulator Arm Assembly.....	91
Remove Rear Cab Door Window Regulator Arm Assembly on Crew Cab.....	95
4.25. OUTER CAB DOOR HANDLE.....	96
Remove Front Cab Door Outer Cab Door Handle.....	96
Remove Rear Cab Door Outer Cab Door Handle on Crew Cab.....	100
4.26. CAB DOOR LATCH.....	101
Remove Front Cab Door Latch.....	101
Remove Rear Cab Door Latch on Crew Cab.....	103
4.27. INNER CAB DOOR HANDLE.....	104
Remove Front Cab Door Inner Cab Door Handle.....	104
Remove Rear Cab Door Inner Cab Door Handle on Crew Cab.....	106
4.28. CAB DOOR WINDOW RUN CHANNELS.....	107
Remove Front Cab Door Window Run Channels.....	107
Remove Rear Cab Door Window Run Channels on Crew Cab.....	110
4.29. CAB DOOR ELECTRIC WINDOW AND DOOR LOCK SWITCH.....	111
Remove Front Cab Door Electric Window and Door Lock Switch.....	111
Remove Rear Cab Door Electric Window and Door Lock Switch on Crew Cab.....	112
4.30. CAB DOOR ELECTRIC MIRROR SWITCH.....	113
Remove Front Cab Door Electric Mirror Switch.....	113
4.31. SEATS.....	114
Remove Passenger Bucket Seat.....	114
Remove Fixed Passenger Seat.....	116

Remove Two Man Fixed Bench Seat without Tool Box.....	118
Remove Two Man Fixed Bench Seat with Tool Box.....	118
Remove Full Width Rear Bench Seat on Extended Cab and Crew Cab.....	118
4.32. CAB DOOR OPENING SCUFF PLATE AND SEAT BELT RETRACTOR COVER.....	120
Remove Cab Door Opening Scuff Plate and Seat Belt Retractor Cover.....	120
4.33. EXTENDED CAB BUNK/STORAGE UNIT.....	121
Remove Bunk/Storage Unit on Extended Cab.....	121
4.34. SIDE AND CORNER INTERIOR TRIM PANEL.....	122
Remove Side and Corner Interior Trim Panel.....	122
Remove Side and Corner Interior Trim Panel on Extended Cab.....	123
Remove Side and Corner Interior Trim Panel on Crew Cab.....	124
4.35. EXTENDED CAB REAR SIDE WINDOW.....	126
Remove Rear Side Window on Extended Cab.....	126
Remove Rear Side Window Latch from Rear Side Window on Extended Cab.....	128
4.36. REAR INTERIOR TRIM PANEL.....	129
Remove Rear Interior Trim Panel.....	129
4.37. HEADER CONSOLE PANEL.....	129
Remove Header Console Panel.....	129
4.38. HEADLINER TRIM PANEL.....	133
Remove Headliner Trim Panel.....	133
Remove Front Headliner Trim Panel on Extended Cab.....	134
Remove Rear Headliner Trim Panel on Extended Cab.....	136
Remove Front Headliner Trim Panel on Crew Cab.....	137
Remove Rear Headliner Trim Panel on Crew Cab.....	139
4.39. CREW CAB B - PILLAR TRIM PANEL.....	140
Remove B - Pillar Trim Panel on Crew Cab.....	140
4.40. CAB DOOR OPENING WEATHER SEALS.....	140
Remove Front Cab Door Opening Weather Seals.....	140
Remove Rear Cab Door Opening Weather Seals on Crew Cab.....	141
4.41. WINDSHIELD WIPER ARM AND BLADE ASSEMBLY.....	142
Remove Windshield Wiper Arm and Blade Assembly.....	142
4.42. CAB COWL TRAY.....	143
Remove Cab Cowl Tray on Models before September 2000.....	143
Remove Cab Cowl Tray on Models after September 2000.....	145
Remove Cab Cowl Tray on Models after February 2002.....	147
4.43. WINDSHIELD WIPER ASSEMBLY.....	149
Remove Windshield Wiper Assembly.....	149
4.44. ELECTRIC WINDSHIELD WIPER MOTOR.....	151
Remove Electric Windshield Wiper Motor.....	151
4.45. WINDSHIELD WASHER BOTTLE AND/OR PUMP MOTOR.....	153
Remove Windshield Washer Bottle and/or Pump Motor.....	153
4.46. ENGINE COVER AND CUP HOLDER.....	157
Remove Cup Holder.....	157
Remove Engine Cover.....	157
4.47. CAB.....	160
General Procedures for Cab Removal.....	160
Remove Cab with Low Mount Front Cab Mounting and Low Mount Rear Cab Mounting for Standard Cab and Extended Cab Models.....	162
Cab with Low Mount Front Cab Mounting for Standard Cab and Extended Cab Models.....	162
Cab with Low Mount Rear Cab Mounting for Standard Cab and Extended Cab Models.....	163

Remove Low Mount Front Cab Mounting Isolators for Standard Cab and Extended Cab before January 2003.....	165
Remove Low Mount Rear Cab Carriage Bolts and Compression Isolators for Standard Cab and Extended Cab Models before January 2003.....	165
Remove Cab with Low Mount Front Cab Mounting for all Crew Cabs, Standard Cab and Extended Cab Models after January 2003 and Low Mount Rear Cab Air Suspension Mounting for all Crew Cab Models.....	165
Cab with Low Mount Front Cab Mounting for all Crew Cabs, Standard Cab and Extended Cab Models after January 2003.....	165
Cab with Low Mount Rear Cab Air Suspension Mounting for all Crew Cab Models....	167
Remove Low Mount Rear Cab Air Suspension for all Crew Cab Models.....	168
Remove Low Mount Rear Cab Air Suspension Mounting Carriage Bolts for all Crew Cab Models.....	168
Remove Cab with Mid High Front Cab Mounting and Mid High Rear Cab Air Suspension Mounting for 4400 Model for City Tractor Applications.....	168
Cab with Mid High Front Cab Mounting and Mid High Rear Cab Air Suspension Mounting for 4400 Model for City Tractor Applications.....	169
Remove Mid High Mount Rear Cab Air Suspension for 4400 Model for City Tractor Applications.....	170
Remove Mid High Mount Rear Cab Air Suspension Mounting Carriage Bolts for 4400 Model for City Tractor Applications.....	171
5. INSTALL.....	171
5.1. ONE PIECE ENCAPSULATED WINDSHIELD.....	171
Install One Piece Encapsulated Windshield using Two Part U216 Urethane Adhesive (adhesive A and curative B)	171
Install One Piece Encapsulated Windshield using One Part U400HV Urethane Adhesive.....	188
5.2. REAR WINDOW GLASS ON VEHICLES WITHOUT VAN BODY.....	192
Install Rear Window Glass on Vehicles without Van Body.....	192
5.3. REAR WINDOW GLASS ON VEHICLES WITH VAN BODY.....	207
Install Rear Window Glass on Vehicles with Van Body.....	207
5.4. HOOD SEAL.....	226
Install Hood Seal.....	226
5.5. SUN SHADE.....	226
Install Sun Shade.....	226
5.6. SUN VISOR AND CLIP.....	226
Install Sun Visor and Clip.....	226
5.7. IGNITION SWITCH AND IGNITION SWITCH CYLINDER.....	227
Install Ignition Switch Cylinder.....	227
Install Ignition Switch.....	227
5.8. INSTRUMENT PANEL.....	228
Install Instrument Panel.....	228
5.9. CAB DOORS.....	230
Install Front Cab Door.....	230
Install Rear Cab Door on Crew Cab.....	231
5.10. CAB DOOR HINGE.....	232
Install Front Cab Door Hinge.....	232
Install Rear Cab Door Hinge on Crew Cab.....	233
5.11. CAB DOOR STRIKER PIN.....	233
Install Front Cab Door Striker Pin.....	233
Install Rear Cab Door Striker Pin on Crew Cab.....	234
5.12. CAB DOOR CHECK BRACKET.....	234

Install Front Cab Door Check Bracket.....	234
Install Crew Cab Rear Door Check Bracket on Crew Cab.....	234
5.13. CAB DOOR CHECK LINK.....	234
Install Front Cab Door Check Link.....	234
Install Crew Cab Rear Door Check Link on Crew Cab.....	235
5.14. CAB DOOR TRIM PANEL.....	235
Install Front Cab Door Trim Panel with Electric Door Window and Locks.....	235
Install Front Cab Door Trim Panel with Manual Door Window and Locks.....	236
Install Crew Cab Rear Cab Door Trim Panel with Electric Door Window and Locks...	236
Install Crew Cab Rear Cab Door Trim Panel with Manual Door Window and Locks...	237
5.15. CAB DOOR INNER DOOR PANEL WATER SHIELD.....	237
Install Front Cab Door Inner Door Panel Water Shield.....	237
Install Rear Cab Door Inner Door Panel Water Shield on Crew Cab.....	238
5.16. CAB DOOR WINDOW SLIDE BLOCK.....	238
Install Front Cab Door Window Slide Block.....	238
Install Rear Cab Door Window Slide Block on Crew Cab.....	239
5.17. CAB DOOR GLASS.....	240
Install Front Cab Door Glass.....	240
Install Rear Cab Door Glass on Crew Cab.....	244
5.18. MODULAR DOOR HARDWARE ASSEMBLY.....	248
Install Front Cab Door Modular Door Hardware Assembly.....	248
Install Rear Cab Door Modular Door Hardware Assembly on Crew Cab.....	249
5.19. CAB DOOR VENT WINDOW.....	251
Install Front Cab Door Vent Window.....	251
5.20. CAB DOOR VENT WINDOW HINGE.....	251
Install Front Cab Door Vent Window Hinge.....	251
5.21. CAB DOOR VENT WINDOW SEAL.....	251
Install Front Cab Door Vent Window Seal.....	251
5.22. CAB DOOR LOCK CYLINDER.....	252
Install Cab Door Lock Cylinder.....	252
5.23. CAB DOOR WINDOW ELECTRIC MOTOR.....	252
Install Front Cab Door Window Electric Motor.....	252
Install Rear Cab Door Window Electric Motor on Crew Cab.....	252
5.24. CAB DOOR WINDOW REGULATOR ARM ASSEMBLY.....	253
Install Front Cab Door Window Regulator Arm Assembly.....	253
Install Rear Cab Door Window Regulator Arm Assembly on Crew Cab.....	256
5.25. OUTER CAB DOOR HANDLE.....	257
Install Front Cab Door Outer Cab Door Handle.....	257
Install Rear Cab Door Outer Cab Door Handle on Crew Cab.....	258
5.26. CAB DOOR LATCH.....	260
Install Front Cab Door Latch.....	260
Install Rear Cab Door Latch on Crew Cab.....	261
5.27. INNER CAB DOOR HANDLE.....	261
Install Front Cab Door Inner Cab Door Handle.....	261
Install Rear Cab Door Inner Cab Door Handle on Crew Cab.....	262
5.28. CAB DOOR WINDOW RUN CHANNELS.....	264
Install Front Cab Door Window Run Channels.....	264
Install Rear Cab Door Window Run Channels on Crew Cab.....	265
5.29. CAB DOOR ELECTRIC WINDOW AND DOOR LOCK SWITCH.....	266
Install Front Cab Door Electric Window and Door Lock Switch	266
Install Rear Cab Door Electric Window and Door Lock Switch on Crew Cab.....	266
5.30. CAB DOOR ELECTRIC MIRROR SWITCH.....	266
Install Front Cab Door Electric Mirror Switch.....	266

5.31. SEATS.....	267
Install Passenger Bucket Seat.....	267
Install Fixed Passenger Seat.....	267
Install Two Man Fixed Bench Seat without Tool Box.....	267
Install Two Man Fixed Bench Seat with Tool Box	268
Install Full Width Rear Bench Seat.....	268
5.32. CAB DOOR OPENING SCUFF PLATE AND SEAT BELT RETRACTOR COVER.....	268
Install Cab Door Opening Scuff Plate and Seat Belt Retractor Cover.....	268
5.33. EXTENDED CAB BUNK/STORAGE UNIT.....	269
Install Bunk/Storage Unit on Extended Cab.....	269
5.34. SIDE AND CORNER INTERIOR TRIM PANEL.....	269
Install Side and Corner Interior Trim Panel.....	269
Install Side and Corner Interior Trim Panel on Extended Cab.....	270
Install Side and Corner Interior Trim Panel on Crew Cab.....	270
5.35. EXTENDED CAB REAR SIDE WINDOW.....	271
Install Rear Side Window Latch onto Rear Side Window on Extended Cab.....	271
Install Rear Side Window on Extended Cab.....	271
5.36. REAR INTERIOR TRIM PANEL.....	273
Install Rear Interior Trim Panel.....	273
5.37. HEADER CONSOLE PANEL.....	273
Install Header Console Panel.....	273
5.38. HEADLINER TRIM PANEL.....	274
Install Headliner Trim Panel on Standard Cab.....	274
Install Front Headliner Trim Panel on Extended Cab.....	275
Install Rear Headliner Trim Panel on Extended Cab.....	275
Install Front Headliner Trim Panel on Crew Cab.....	276
Install Rear Headliner Trim Panel on Crew Cab.....	277
5.39. CREW CAB B - PILLAR TRIM PANEL.....	277
Install B - Pillar Trim Panel on Crew Cab.....	277
5.40. CAB DOOR OPENING WEATHER SEALS.....	278
Install Front Cab Door Opening Weather Seals.....	278
Install Rear Cab Door Opening Weather Seals on Crew Cab.....	278
5.41. WINDSHIELD WIPER ARM AND BLADE ASSEMBLY.....	279
Install Windshield Wiper Arm and Blade Assembly.....	279
5.42. CAB COWL TRAY.....	279
Install Cab Cowl Tray on Models before September 2000.....	279
Install Cab Cowl Tray on Models after September 2000.....	280
Install Cab Cowl Tray on Models after February 2002.....	281
5.43. WINDSHIELD WIPER ASSEMBLY.....	281
Install Windshield Wiper Assembly.....	281
5.44. ELECTRIC WINDSHIELD WIPER MOTOR.....	282
Install Electric Windshield Wiper Motor.....	282
5.45. WINDSHIELD WASHER BOTTLE AND/OR PUMP MOTOR.....	283
Install Windshield Washer Bottle and/or Pump Motor.....	283
5.46. ENGINE COVER AND CUP HOLDER.....	283
Install Engine Cover.....	283
Install Cup Holder.....	284
5.47. CAB.....	285
Cab Squaring.....	285
Install Cab with Low Mount Front Cab Mounting and Low Mount Rear Cab Mounting for Standard Cab and Extended Cab Models.....	285
Install Low Mount Front Cab Mounting Isolators for Standard Cab and Extended Cab Models Before January 2003.....	285

Install Low Mount Rear Cab Carriage Bolts and Compression Isolators for Standard Cab and Extended Cab Models Before January 2003.....	285
Cab with Low Mount Front Cab Mounting and Low Mount Rear Cab Mounting for Standard Cab and Extended Cab Models.....	286
Install Cab with Low Mount Front Cab Mounting for Models after January 2003 and Low Mount Rear Cab Air Suspension Mounting for all Crew Cab Models.....	287
Install Low Mount Rear Cab Air Suspension Mounting Carriage Bolts for all Crew Cab Models.....	287
Install Low Mount Rear Cab Air Suspension for all Crew Cab Models.....	287
Cab with Low Mount Front Cab Mounting for Models after January 2003 and Low Mount Rear Cab Air Suspension Mounting for all Crew Cab Models.....	287
Install Cab with Mid High Front Cab Mounting and Mid High Rear Cab Air Suspension Mounting for 4400 Model for City Tractor Applications.....	288
Install Mid High Mount Rear Cab Air Suspension Mounting Carriage Bolts for 4400 Model for City Tractor Applications.....	288
Install Mid High Mount Rear Cab Air Suspension for 4400 Model for City Tractor Applications.....	288
Cab with Mid High Front Cab Mounting and Mid High Rear Cab Air Suspension Mounting for 4400 Model for City Tractor Applications.....	289
General Procedures for Cab Installation.....	289
6. TROUBLESHOOTING.....	291
6.1. ELECTRIC WINDSHIELD WIPER MOTOR.....	291
6.2. WASHER PUMP MOTOR.....	292
7. LUBRICATION.....	292
7.1. 4000 MILES (6000 KM) OR MONTHLY.....	292
7.2. AS REQUIRED.....	292
8. ADJUSTMENTS.....	293
8.1. CAB DOOR.....	293
8.2. HINGE AT CAB HINGE PILLAR.....	293
8.3. STRIKER PIN AT LOCK PILLAR.....	294
8.4. WINDSHIELD WIPER ARM AND BLADE ASSEMBLY.....	296
8.5. CAB AIR SUSPENSION.....	297
9. FORMS.....	299
9.1. BONDED WINDSHIELD REPLACEMENT REPORT.....	299
10. TORQUE.....	301
10.1. TORQUE CHART.....	301

1. DESCRIPTION

1.1. STANDARD CAB, EXTENDED CAB AND CREW CAB

The cab for these models, including extended cab and crew cab Models, is made of double sided galvanized steel which provides a strong cab with less weight and excellent corrosion protection.

Figure 1 illustrates the standard cab for the model/series covered in this section.

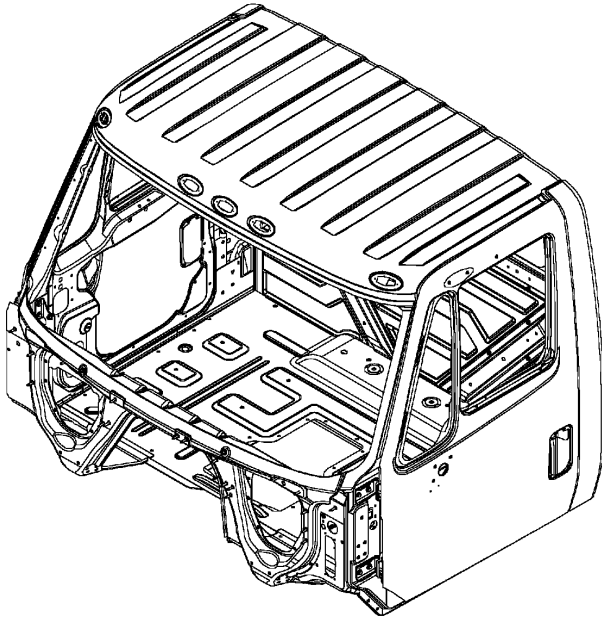
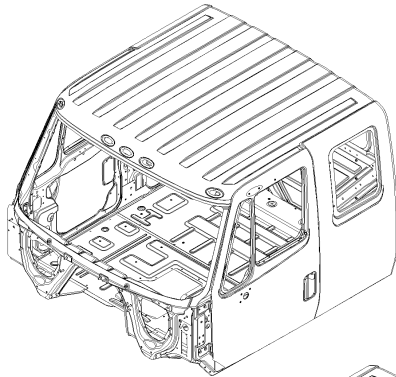
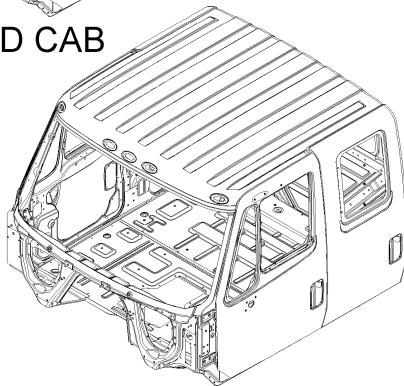


Figure 1 Standard Cab

Figure 2 illustrates the extended cab and crew cab for the model/series covered in this section.



EXTENDED CAB



CREW CAB

Figure 2 Extended Cab and Crew Cab

1.2. VEHICLE IDENTIFICATION NUMBER (VIN) TAG LOCATION

Refer to Figure 3 for Items in parentheses.

VIN's are necessary if the need for replacement parts should occur. For this reason, you will want to know the location for these important numbers. **Cab** and **Chassis** VINs (Items 1 and 2) are located on the face of cab door latch pillar (Item 3), driver's side.

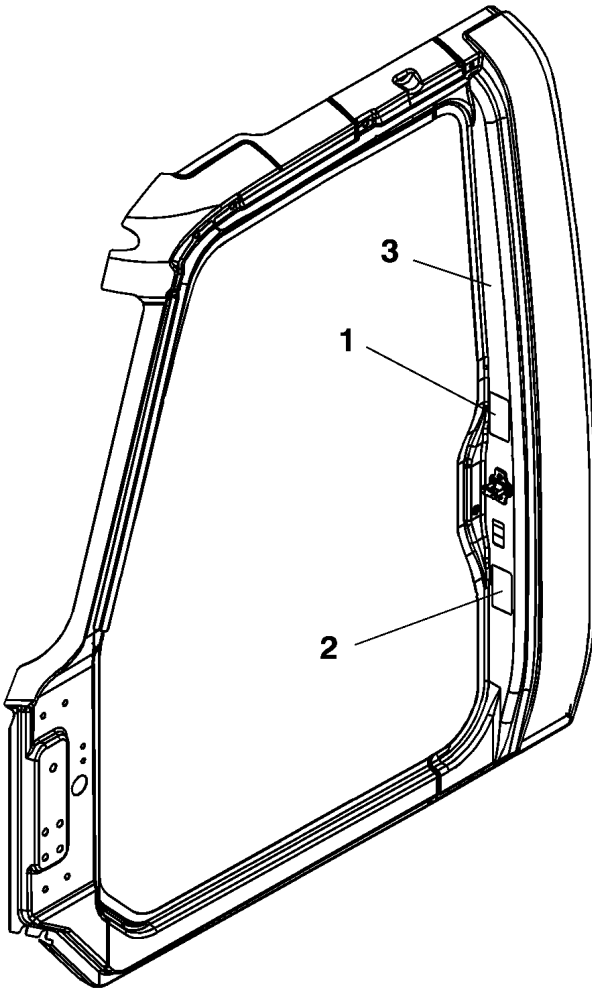


Figure 3 VIN Tag Location

1. CAB "VIN" TAG
2. CHASSIS "VIN" TAG
3. CAB DOOR LATCH PILLAR

1.3. ELECTRIC WINDSHIELD WIPERS

Refer to Figure 4 for Items in parentheses.

The windshield wiper system consists of a single unitized 12 volt electric wiper motor (Item 1) that operates the wiper arms (Item 2) through wiper linkage (Item 3). The motor has two speeds (low and high), and a park position which is controlled by a three-position switch.

Since the electric wiper motor is of unitized construction, there is no need for motor rebuild or adjustments. There are no serviceable parts; the complete assembly is replaced.

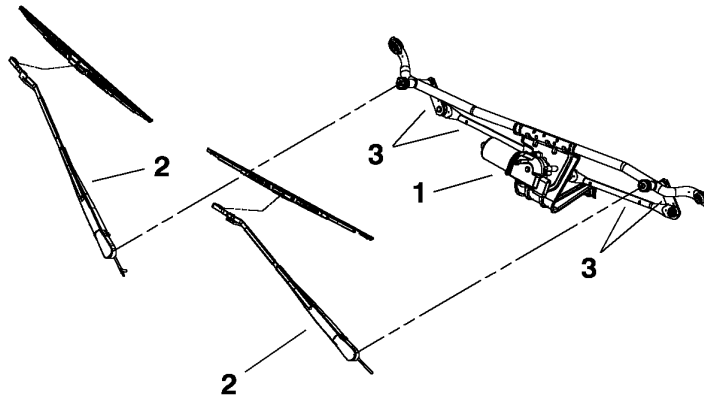


Figure 4 Electric Windshield Wipers

1. ELECTRIC WIPER MOTOR
2. WIPER ARM
3. WIPER LINKAGE

1.4. WINDSHIELD WASHER

The windshield washer consists of a washer bottle mounted, motor driven, displacement type pump that delivers washer solution to the windshield through hoses and nozzles in the wiper arms. The pump motor (Item 1) may be integral with washer bottle (Item 2) or removable Figure 5 (See Figure 5, page 5) and Figure 6 (See Figure 6, page 6).

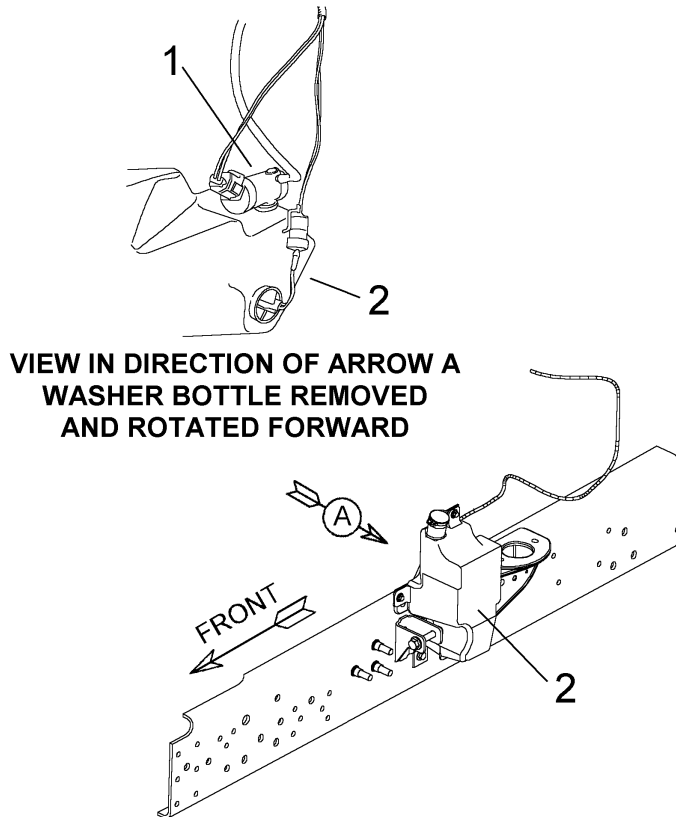
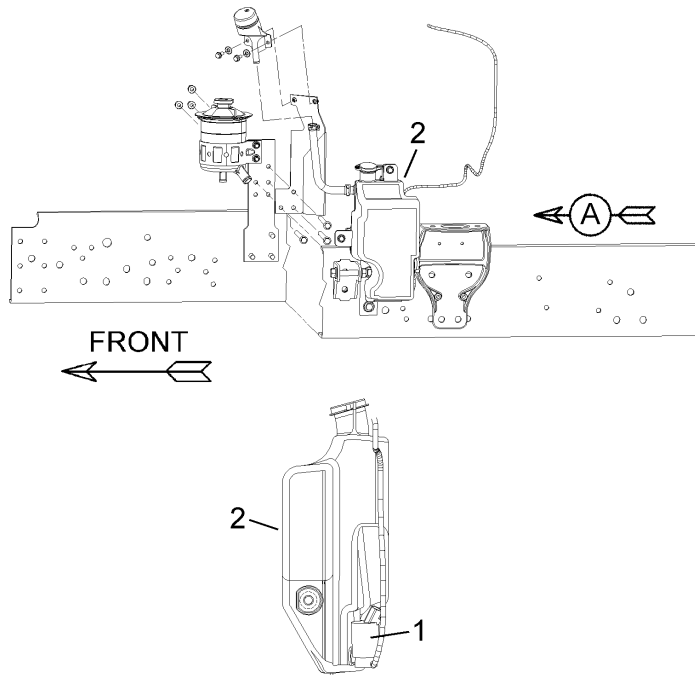


Figure 5 Washer Bottle Location without Hood Access Hatch

1. PUMP MOTOR
2. WASHER BOTTLE



VIEW IN DIRECTION OF ARROW A

Figure 6 Washer Bottle Location with Hood Access Hatch

1. PUMP MOTOR
2. WASHER BOTTLE

2. OPERATION

2.1. ELECTRIC WINDSHIELD WIPERS

The windshield wiper motor is a permanent magnet electric motor with a worm gear on the armature shaft which drives a follower gear on the crankshaft. A cam is molded on the output gear and operates against a switch mounted on the molded cover and is connected in the motor circuit.

When the motor is turned on, the switch floats in the circuit. When the motor is turned off, the switch continues to supply current to the motor until the molded cam reaches the switch. This opens the circuit in the motor and stops the wipers in the park position.

CAUTION – Do not attempt to move the blades through their sweep by grasping the wiper arm. This action may result in the teeth being broken off the drive gear or the linkage bent. If blades are frozen to windshield, do not operate control switch until they have been freed.

The three-position switch located on a knob at the end of the turn signal lever controls off, low speed, or high speed operation and intermittent wiper (five pre-set delay settings) by rotating the knob.

2.2. WINDSHIELD WASHER

The control knob located at the end of the turn signal lever controls the mist and windshield washer features by pressing in on the end of the knob. Pressing in and instantly releasing the knob activates the mist wipe feature (one pass only). Pressing in and holding momentarily will start the washer feature and activate the wipers.

3. MAINTENANCE

3.1. WINDSHIELD WASHER

A minimum of service is required to keep the windshield washer operating. Keep reservoir filled with windshield washer solvent and keep wiper nozzles clean. If dirt enters the reservoir, remove reservoir and flush out with clean water. Refill reservoir with specified solvent after re-installing.

4. REMOVE

4.1. ONE PIECE ENCAPSULATED WINDSHIELD

Remove One Piece Encapsulated Windshield

A one piece encapsulated windshield Figure 7 is standard.

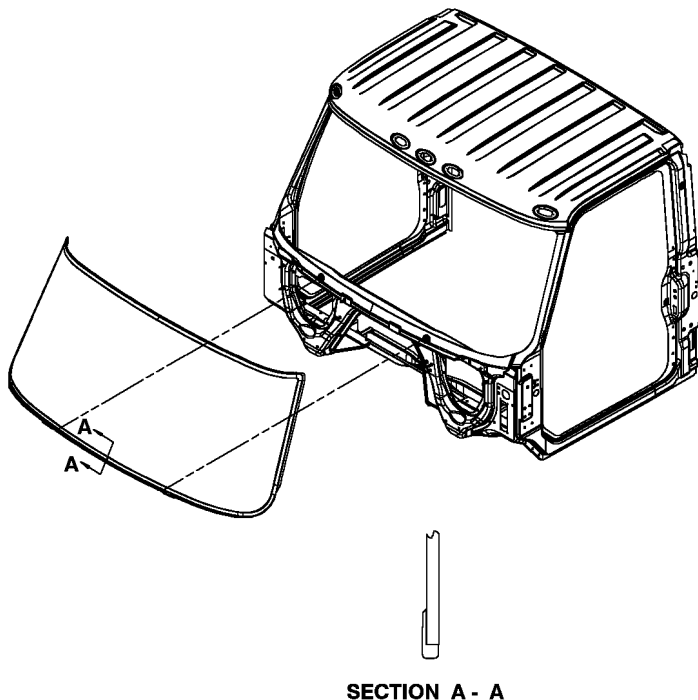


Figure 7 One Piece Encapsulated Windshield