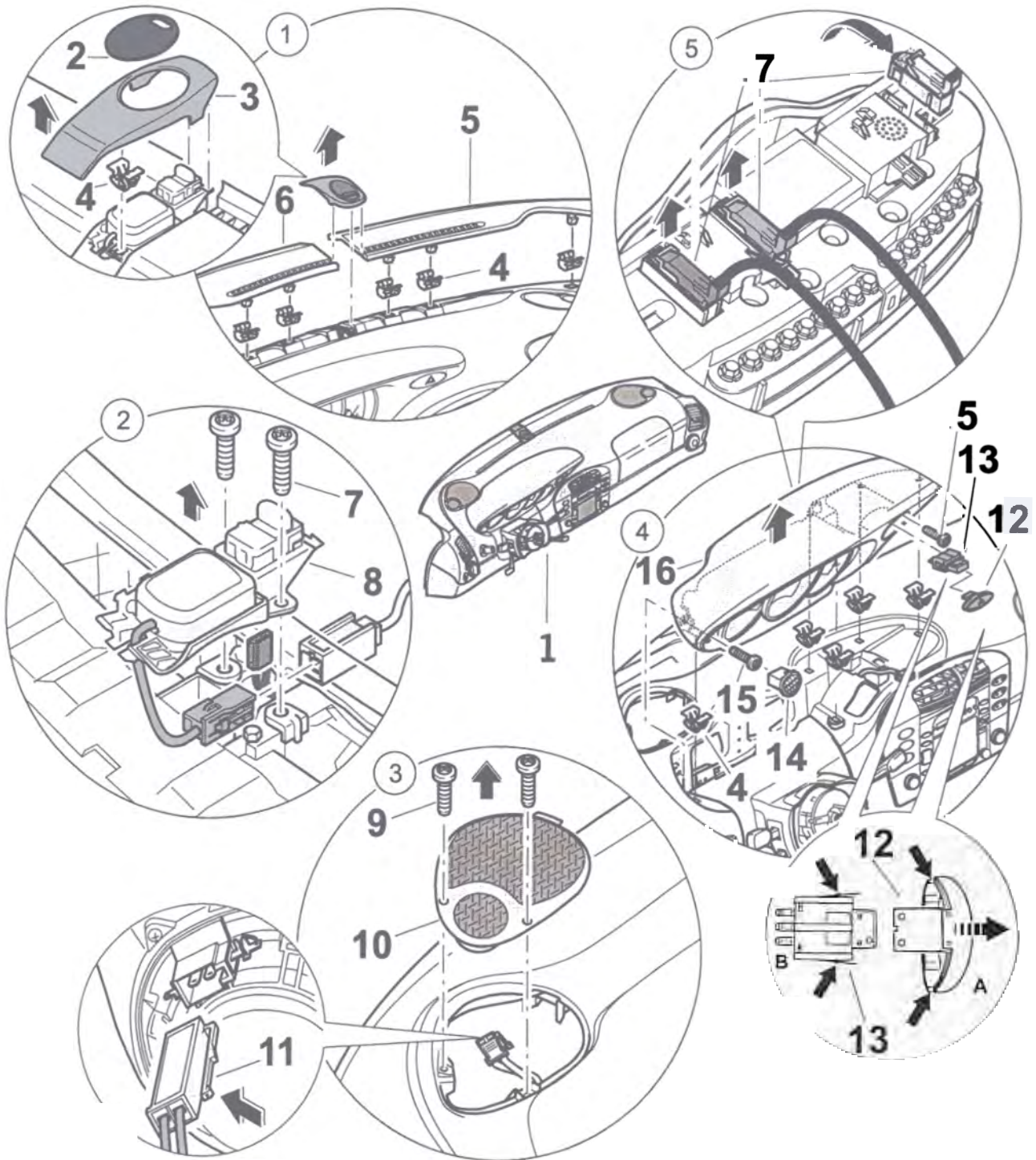




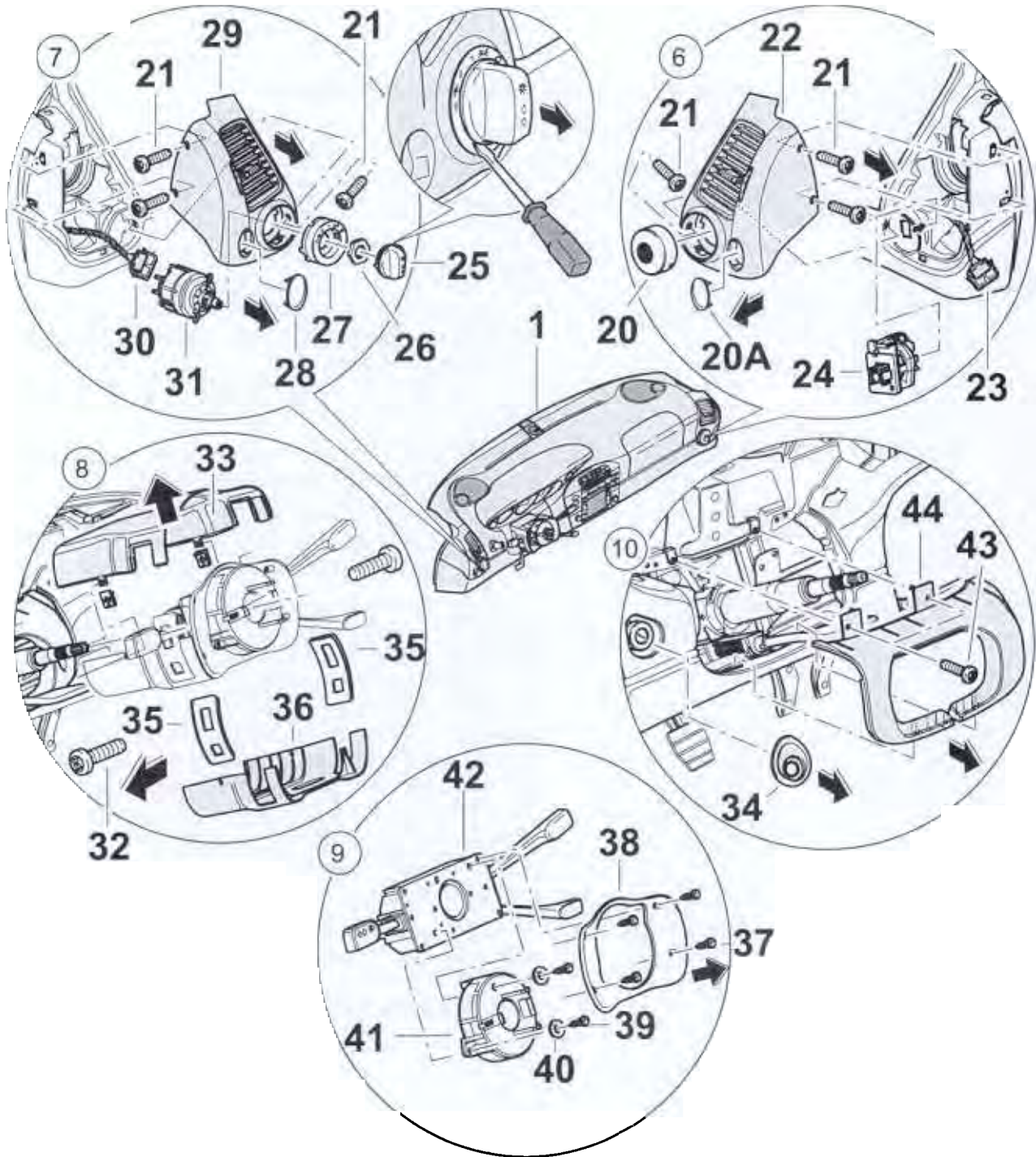
Disassembling the dashboard



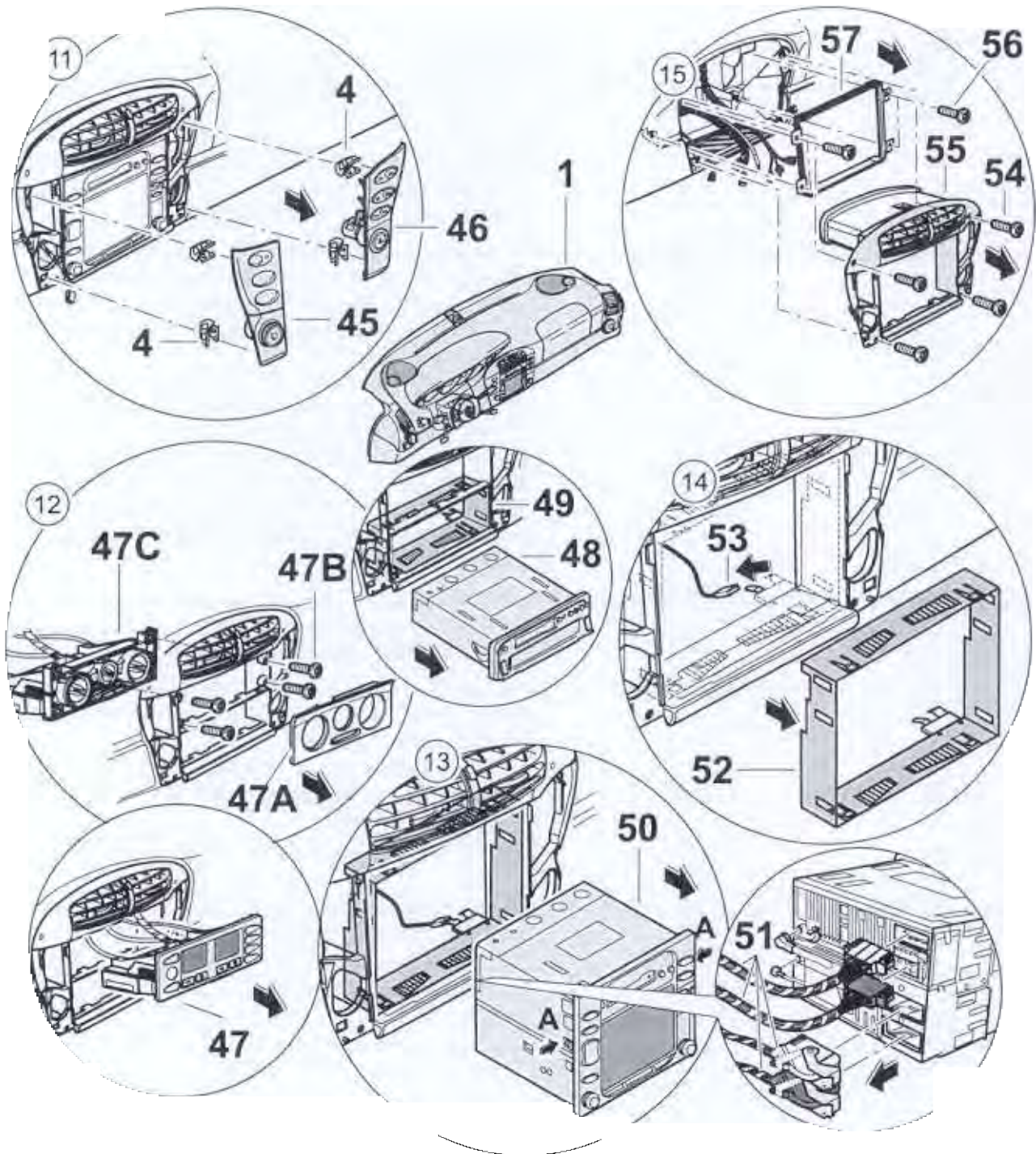
**Note!**

- ◆ The following components must be removed before disassembling the dashboard.
- ◆ ⇒ Rep. Gr. 705719; Removing and installing A-pillar trim.
- ◆ ⇒ Rep. Gr. 695819; Removing and installing the driver's airbag
- ◆ ⇒ Rep. Gr. 695919; Removing and installing the passenger's airbag

No.	Procedure	Instructions
	Removing the alarm readiness cover and the defroster cover	Lift the alarm readiness cover -2- and unclip it upwards out of the clip -4- . The lens cover -3- can be unclipped for replacement purposes. Lift the defroster covers left and right -5, 6- with a plastic spatula and unclip out of the clips -4- .
2	Removing the alarm readiness unit	Undo the fastening screws -7- , lift the alarm readiness unit -8- and disconnect the electrical connection.
3	Removing the loudspeaker	Undo the fastening screws -9- , raise the outside of the loudspeaker -10- and guide it out. At the plug connection -11- , press the locking tab -arrow- and disconnect.
4	Removing the instrument mount	To remove the hazard warning light switch: switch on the switch -12- (button comes out). There are small openings on the sides which now project over the instrument cowl. Insert two narrow screwdrivers into the openings -arrow A- and pull off the button towards the front. The hazard warning light switch -13- is held in the instrument bridge -16- by two locking hooks -arrow B- . Press the right locking hook toward the switch, grip the button holder with a pair of pliers and pull out the switch toward the front. Pull off the cover -14- on the left side and undo the fastening screws -15- . Lift the instrument mount -16- on the left and right and unclip from the clips -4- .
5	Disconnecting the electrical plug connection	Disconnect the electrical connection -17- on the rear side of the instrument mount. To do so, press the locking tab of the plug connection and unlock the locking lever in the -direction of the arrow- .



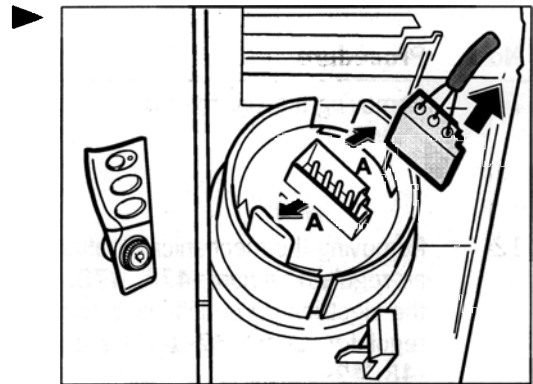
No.	Procedure	Instructions
	Removing the side vents and the temperature sensor	Pull off the covering caps -20, 20A- . Undo the fastening screws -21- at the side, remove the side vent -22- towards the front. Unclip the temperature sensor -24- out of the dashboard towards the rear. Disconnect the electrical plug connection -23- .
7	Removing left side vents and main light switch	Pull forward the control button -25- of the light switch -31- as far as it will go -in the direction of the arrow- towards the front. Press in the locking device at the lower side using a small screwdriver and remove the control button towards the front. Undo the fastening screws -21- at the side, remove the side vent towards the front. Disconnect the plug connection -30- of the main light switch -31- . In order to disassemble the side vent, the covering cap -28- , the fastening nut -26- and the inner race -27- of the main light switch -31- can be removed. Remove light switch -31- from the side vent by turning it slightly in clockwise direction.
8	Removing the steering column switch cover	Undo the fastening screws -32- on the lower steering column switch cover -36- and remove both steering column covers -33, 36 or 35- .
9	Removing the steering column switch	Undo the fastening screw -37- in the cover -38- and the steering column switch -42- and remove. Disconnect the electrical plug connection. In order to disassemble the steering column switch -42- , the slip ring -41- can be disconnected by undoing the fastening screws -39, 40- . See: ⇒ Rep. Gr. 695419; Removing and installing the contact unit.
10	Removing the steering column cover	Undo the fastening screw -43- in the steering column cover -44- and unclip the cover upwards.



No.	Procedure	Instructions
	Removing the switch cover	Unclip the switch cover on the left and right -45, 46- towards the front. Disconnect the electrical plug connections of the tip switches.
12	Removing the mechanical heating and fresh air regulator variant -47A, 47B, 47C- , the electrical air-conditioning and heating regulator variant -47- and the car radio -48, 49-	See: ⇒ Rep. Gr. 851019; Removing and installing mechanical heating and fresh-air control. See: ⇒ Rep. Gr. 870219; Removing and installing the heating/air-conditioning control. See: ⇒ Rep. Gr. 912019; Removing and installing the car radio.
13	Removing display and operator control unit (PCM)	Press in and hold both spring clips -arrow A- . Pull out the display and operator control unit -50- . Disconnect the electrical plug connections -51- on the rear side of the display and operator control unit. See: ⇒ Rep. Gr. 911019; Removing and installing display and operator control unit (PCM).
14	Removing the PCM retaining bracket	Raise the retaining clip -arrow B- of the retaining bracket -52- and guide it out of the cut-out of the central vents -55- . Pull off the ground cable -53- .
15	Removing the central vent	Undo the fastening screws -54- and guide the central vent -55- out of the dashboard -1- . Undo the fastening screws -56- from the inside of the retaining bracket -57- .

Removing the regulator for wiping interval

- 1 - Disconnect the electrical plug connection.
- 2 - Press the locking tabs of the regulator for the wiping interval -arrows A- outwards and guide the regulator out of the front cover towards the front.

**Removing the cigarette lighter**

- 1 - Disengage the cover -arrow A- upwards.
- 2 - Press the lights bracket -arrow B- out to the side with a narrow screwdriver.
- 3 - Disengage the cigarette lighter in the direction of -arrow C- out of the front cover.

