

Maintenance

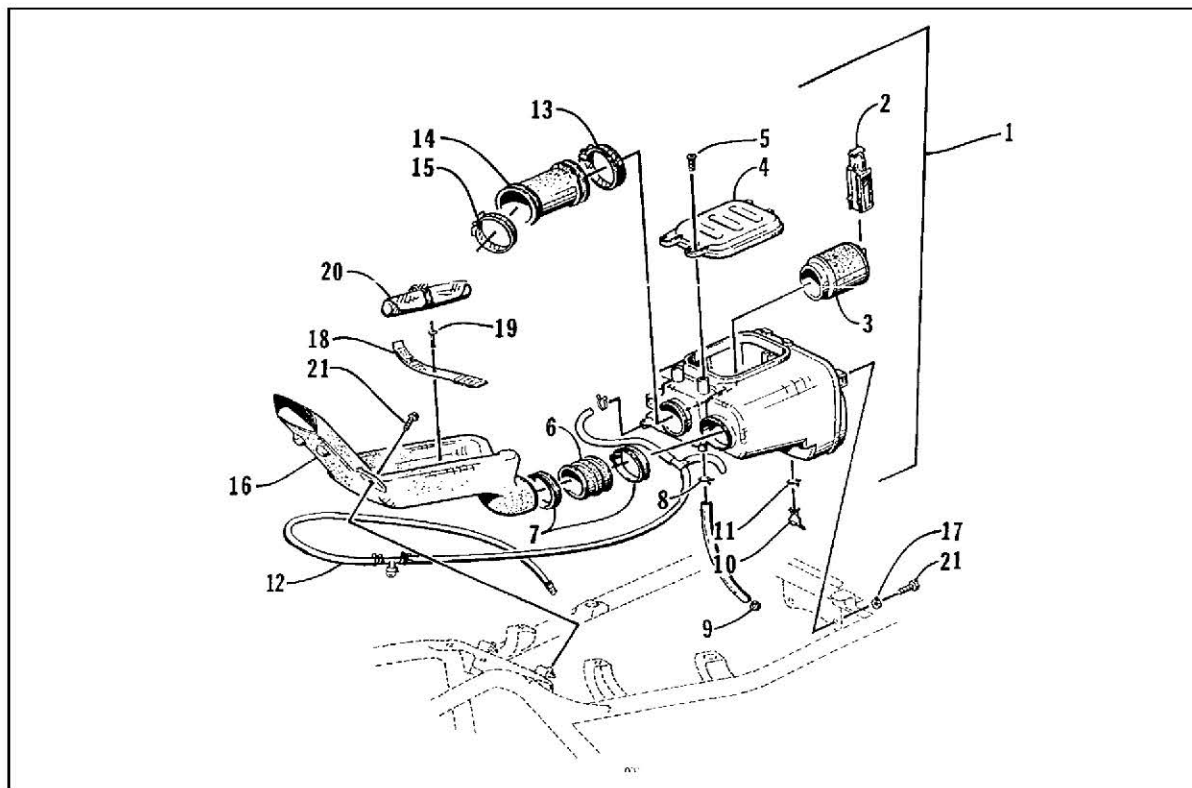


Fig. 22 - 250/300 cc

- | | | |
|---------------------|---------------|-------------------|
| 1. Air cleaner assy | 8. Clamp | 15. Clamp |
| 2. Retainer | 9. Drain plug | 16. Snorkel |
| 3. Filter w/sleeve | 10. Valve | 17. Lock washer |
| 4. Cap | 11. Clamp | 18. Strap |
| 5. Cap screw | 12. Hose assy | 19. Plastic rivet |
| 6. Joint | 13. Clamp | 20. Tool kit |
| 7. Clamp | 14. Boot | 21. Cap screw |

INSTALLING AIR CLEANER

1. Place the air cleaner into the frame; then connect the crankcase breather hose.
2. Secure the carburettor boot to the air cleaner.
3. Install the machine screws securing the air cleaner to the frame.
4. Install the filter with foam wrap into the air cleaner; then secure with the retainer.
5. Install the air cleaner housing cover and secure with the machine screws.
6. Install the air-intake snorkel.
7. Install the seat making sure it is properly secured.