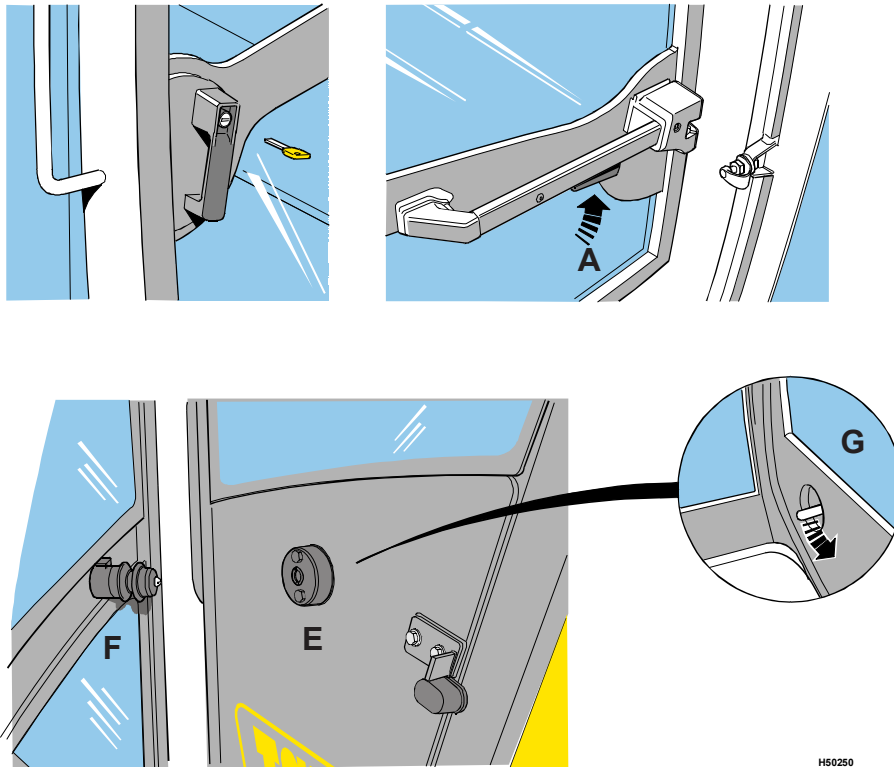


B6

CAB

B6



H50250

B7

CAB

B7

The cab is bolted on top of the mainframe and is a welded steel construction. The cab has a sliding window on the right side, a hinged door and an up and over windscreen. All windows are of toughened glass. The cab is fitted with a windscreen wiper, heater fan, seat and all operating controls and instruments.

### CAUTION

**Do not drive the machine with the door unlatched. It must be correctly closed or secured fully open.**

HOP29

### Opening and closing the door

To open a door from the outside, unlock it with the key provided and press the lock barrel to release the catch. To open a door from inside, push lever **A**. Close the door from the inside by pulling it firmly, it will latch itself.

### Securing the door in the open position

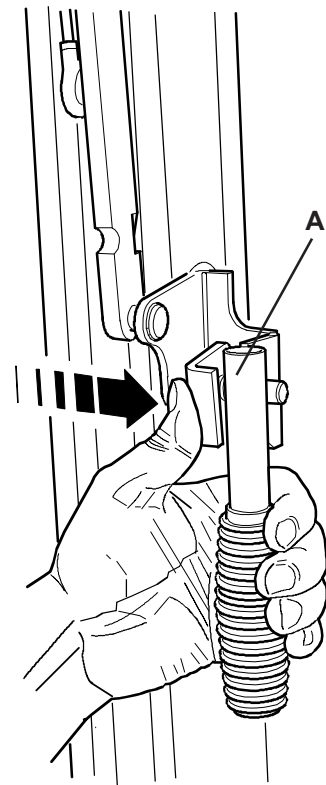
Swing the door fully open until the spigot **E** on the side of the cab locates securely in the socket **F** on the door.

To release the door when it is secured fully open, operate the button **G** on the inside of the door.

OPENING THE WINDSCREEN

To open the up and over window, disengage the latch pins **A** on both handles and lift the screen to a position parallel with the roof. Secure in place with the latch pins **A**.

**Note:** Care must be taken when lowering the window not to bump the top edge of the lower front window.



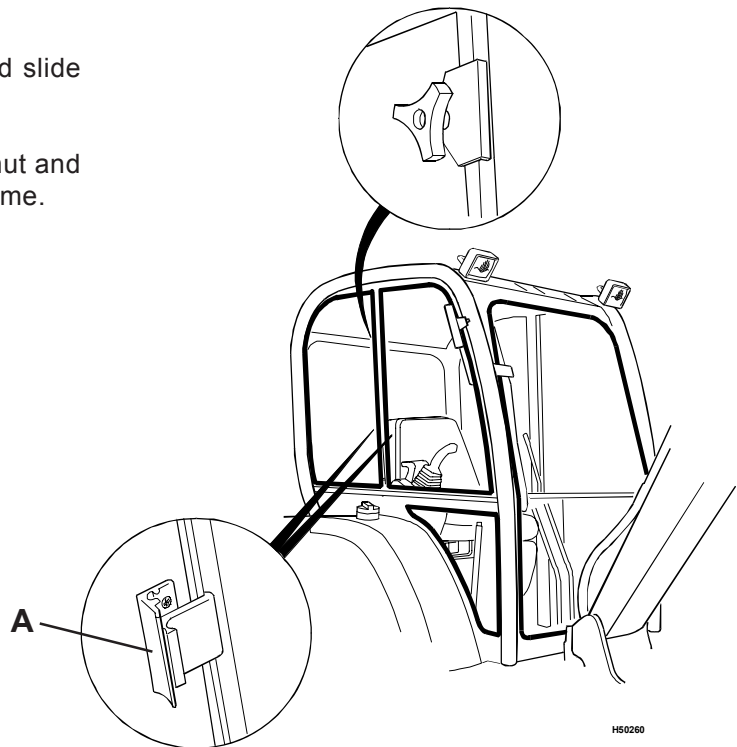
H14080

OPENING THE SIDE WINDOW

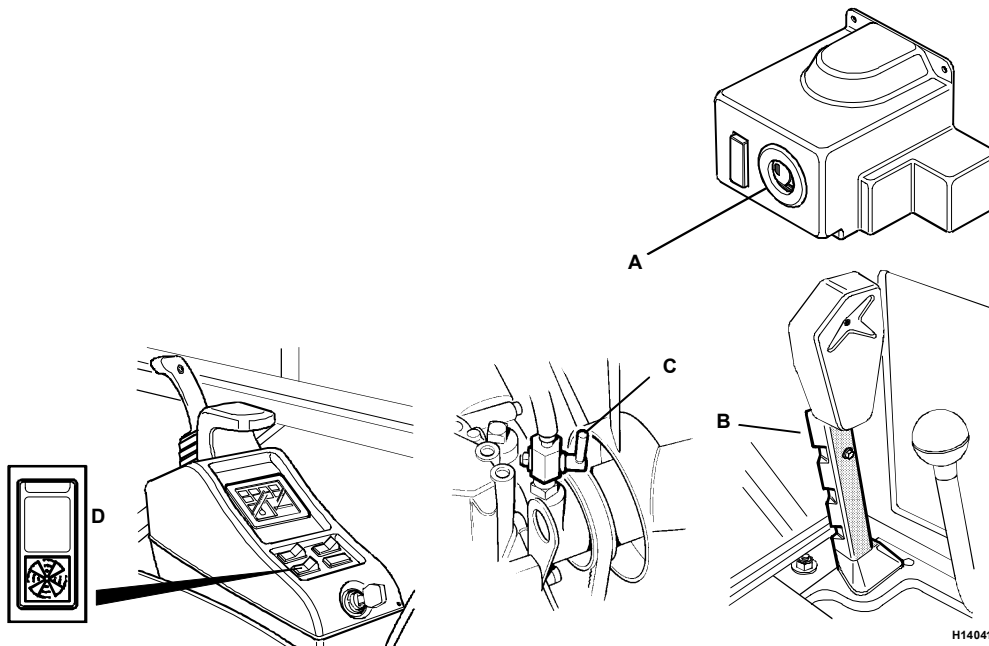
The side window is held closed by catch **A** operated from inside the cab.

To open the window, operate the catch **A** and slide the window to the desired position.

To close the window, slide the window fully shut and check that the catch **A** has located on the frame.



H50260



H14041

Hot air can be directed to the cab floor by closing / opening flap **A**. Hot air is directed to the windscreen via a fixed vent system **B**.

For the summer use, the heater element can be turned off at the water valve **C** on the engine.

### **WARNING**

**Stop the engine before lifting the engine cover to operate valve **C**.** HOP30

### Heater fan

Press the rocker switch **D** located on the right hand instrument console, down to switch the fan on. Return the switch to the first position to turn the fan off.

### WARNING

Do not adjust the seat with the engine running otherwise your legs could knock the control levers. HOP31

Depending on the type of machine various adjustments can be made to the positions of the control levers and the seat consoles/armrests.

The operators seat can be adjusted for your comfort. A correctly adjusted seat will reduce operator fatigue. Position the seat so that you can comfortably reach the controls with your feet on the cab floor. The seat is adjustable for height and reach.

### CAUTION

Having adjusted the seat position, ensure the seat locking lever has engaged fully.

### Suspension seat - when fitted

### WARNING

Whilst seated, adjust the dial below the seat until your weight in kgs. appears in the red shaded area. Failure to set the weight adjustment dial will reduce the beneficial isolation effect of the seat suspension and may result in personal discomfort or injury.

2-2-1-12

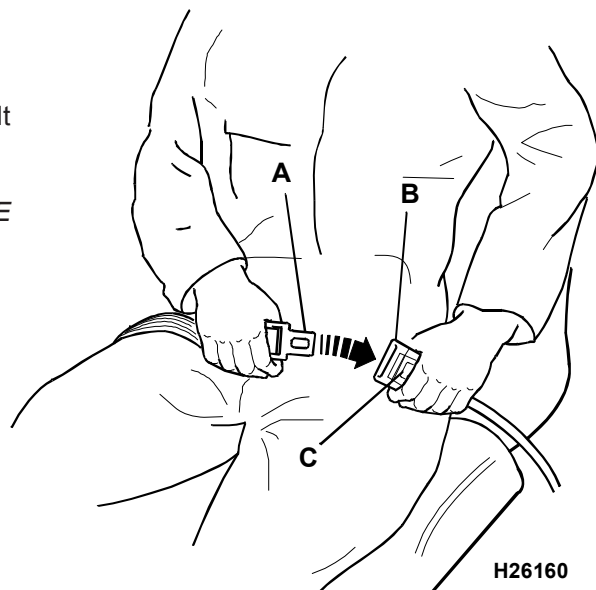
### Fasten the seat belt

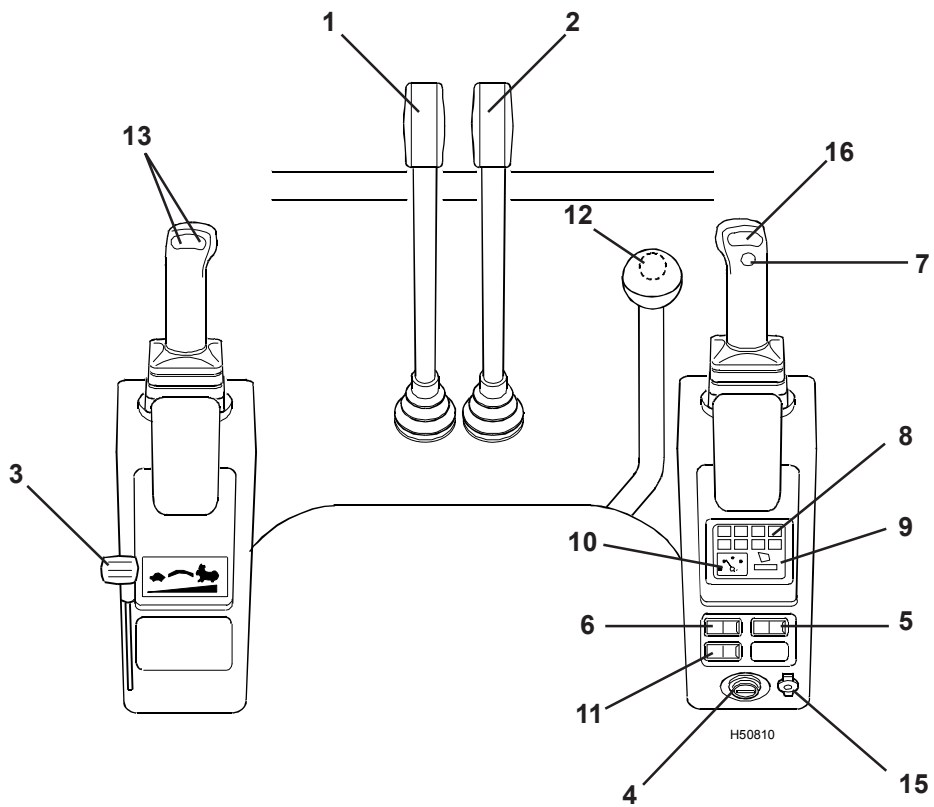
Sit correctly in the seat. Make sure the belt is not twisted. Push the male fitting **A** into the buckle **B** until it latches.

### Release the seat belt

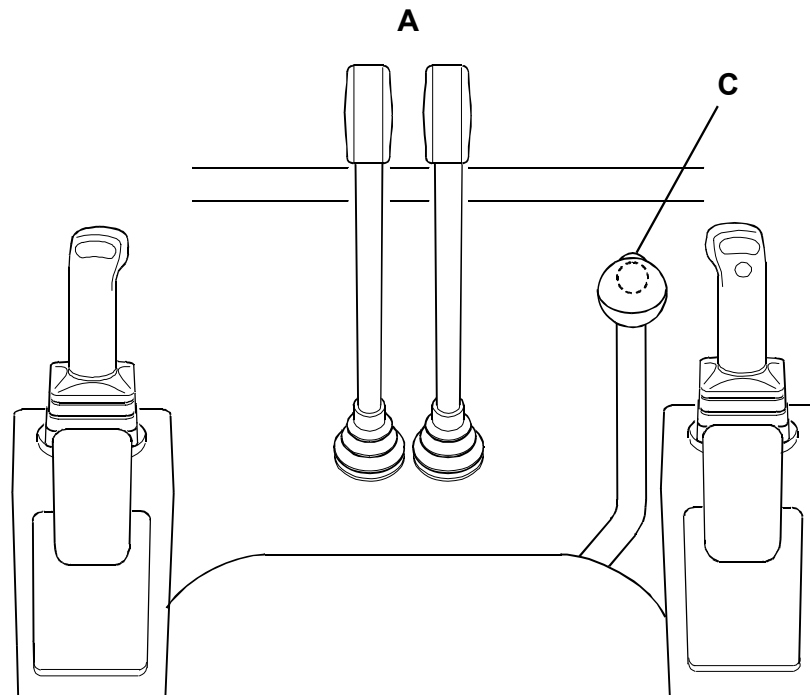
Press button **C** and pull the recoil side of the belt outwards.

**Note:** If your machine is fitted with a seat belt, USE IT.





- 1 Left Track Control Lever
- 2 Right Track Control Lever
- 3 Hand Throttle Lever
- 4 Starter Switch
- 5 Working Lights Switch
- 6 Windscreen Wiper Switch
- 7 Horn Button
- 8 Warning Lights
- 9 Hourmeter
- 10 Fuel Gauge
- 11 Heater Fan
- 12 Two Speed Tracking Switch
- 13 Slew Switches
- 15 Beacon Socket
- 16 Boom Boost Switch (optional)



H50280

### Track controls

The two tracks are controlled by a pair of control levers **A** in front of the seat. Each lever controls one track and is spring loaded to a central position. In this position the track does not operate. The left side lever controls the left track. The right side lever controls the right track. The two levers can be operated individually or together as necessary to move the machine as required. This can be done using one hand or both. An increase in speed can be achieved by operating the push button switch **C** located in the dozer lever if fitted.

#### **WARNING**

**Make sure that all persons are clear before moving.**

#### **WARNING**

**The track controls operate as described when the dozer is located in front of the windscreen. If the dozer is positioned behind the cab, the lever operation will be reversed. It is advisable when tracking to always position the dozer to the front of the machine.**

### Forward

To move the machine forward, push both levers forward. Release the levers to stop.

### Reverse

To move the machine backward, pull both levers backward. Release the levers to stop.

### Turn

To turn the machine whilst travelling, move the lever back towards the central position on the side towards which you want to go e.g. move the left lever back to turn left. This causes one of the tracks to move slower than the other. The faster moving track will push the machine around. Release the lever to stop.

### Spin

To spin the machine around though 360°, without moving it, operate one lever, in a forward position and the other in a reverse position. This will cause the tracks to drive in opposite directions and hence push the machine around.

## Engine Controls

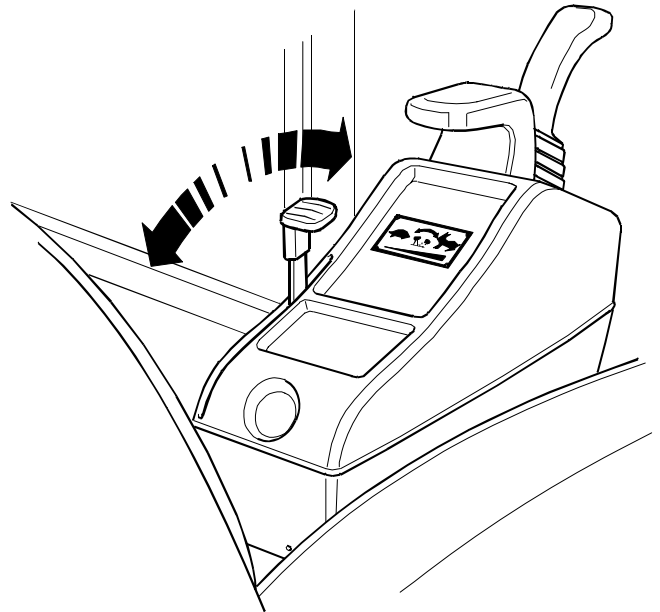
### Engine speed

A hand operated throttle lever in the cab, controls the speed of the engine.

Move the lever to increase or decrease the engine speed. The lever can be left in any position between idle and maximum as required.

### Engine start / stop

To start and stop the engine use the starter switch, see **Switches** on the following page.



H50290