

**TORQUE CONVERTER/POWERSHIFT****Dismantling and Assembly****Stage 1 – Ancillaries**

Use the numerical sequence as a guide to Dismantling.

For Assembly, reverse the sequence.

**NOTE:** If required, Dismantling as far as this stage may be carried out with the powershift unit still installed on the machine.

**When Dismantling**

Refer to page F 2-2 for electrical connections.

Drain oil at A. Blank oilways and pipe connections to prevent entry of dirt.

**When Assembling**

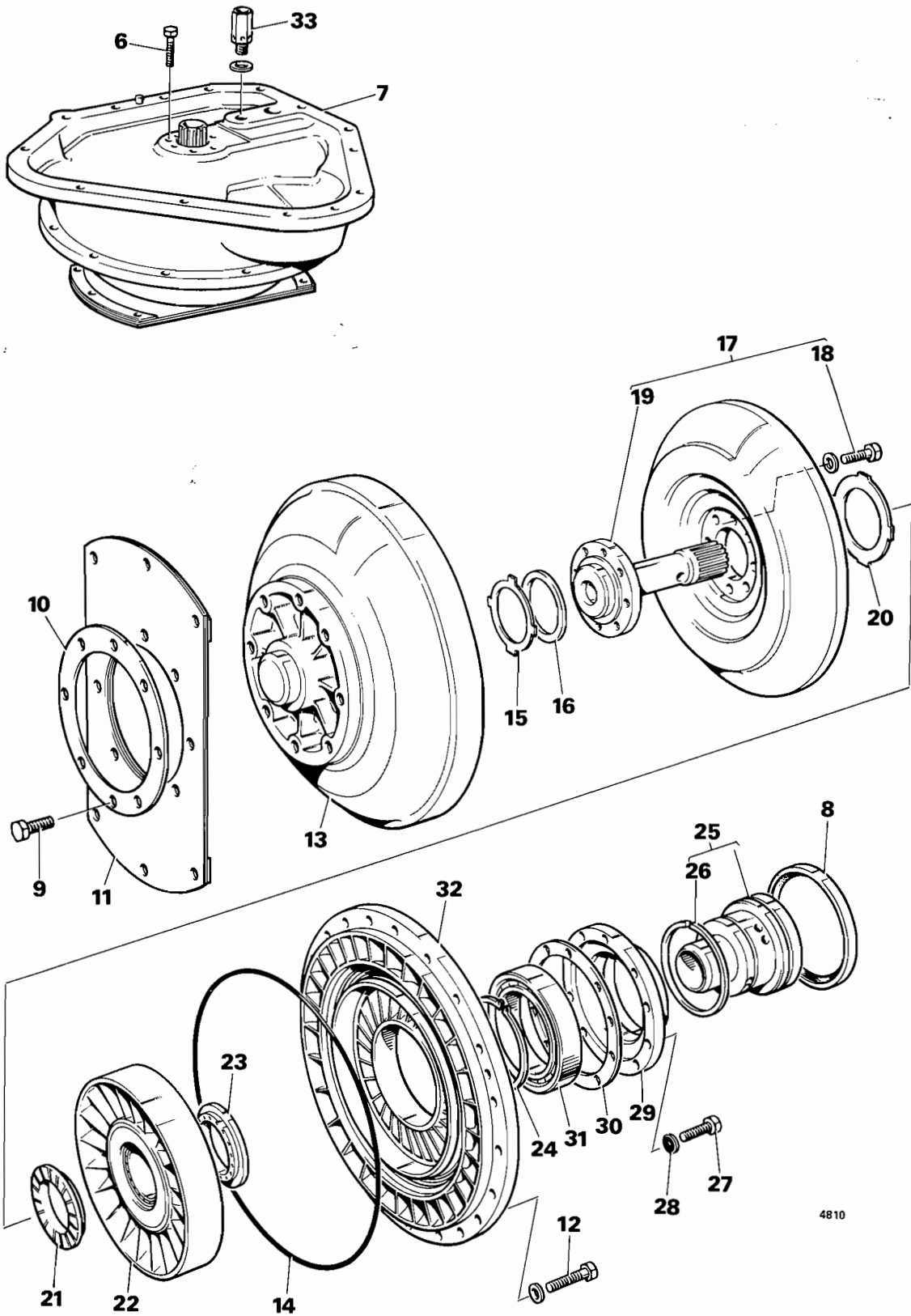
Renew all 'O' rings, seals and gaskets.

Lightly oil quill shaft 10, ensuring that the end having the longer splines is entered into the torque converter.

Refill with specified lubricant after installation of the powershift unit (see Section 3).

**Torque Settings**

Item	Nm	kgf m	lbf ft
2	12	1.2	9
6	56	5.7	42
11 & 14	32	3.3	24
17 & 21	32	3.3	24
24 & 25	23.7	2.4	16



**TORQUE CONVERTER/POWERSHIFT**

**Dismantling and Assembly**

**Torque Settings**

**Stage 2—Torque Converter**

Item	Nm	kgf m	lbf ft
1	98	10	72
6	32	3.3	24
9	37	3.8	27
12	23	2.4	17
18	32	3.3	24
27	23	2.4	17

Use the numerical sequence as a guide to Dismantling.

For Assembly, reverse the sequence.

**When Dismantling**

After removal of bolts 6, lift housing 7 clear of the torque converter assembly.

Identify end plates 21 and 23 to assist replacement in their original positions.

Inspect safety valve 33.

**When Assembling**

Ensure that sealing washers 28 are fitted on bolts 27.

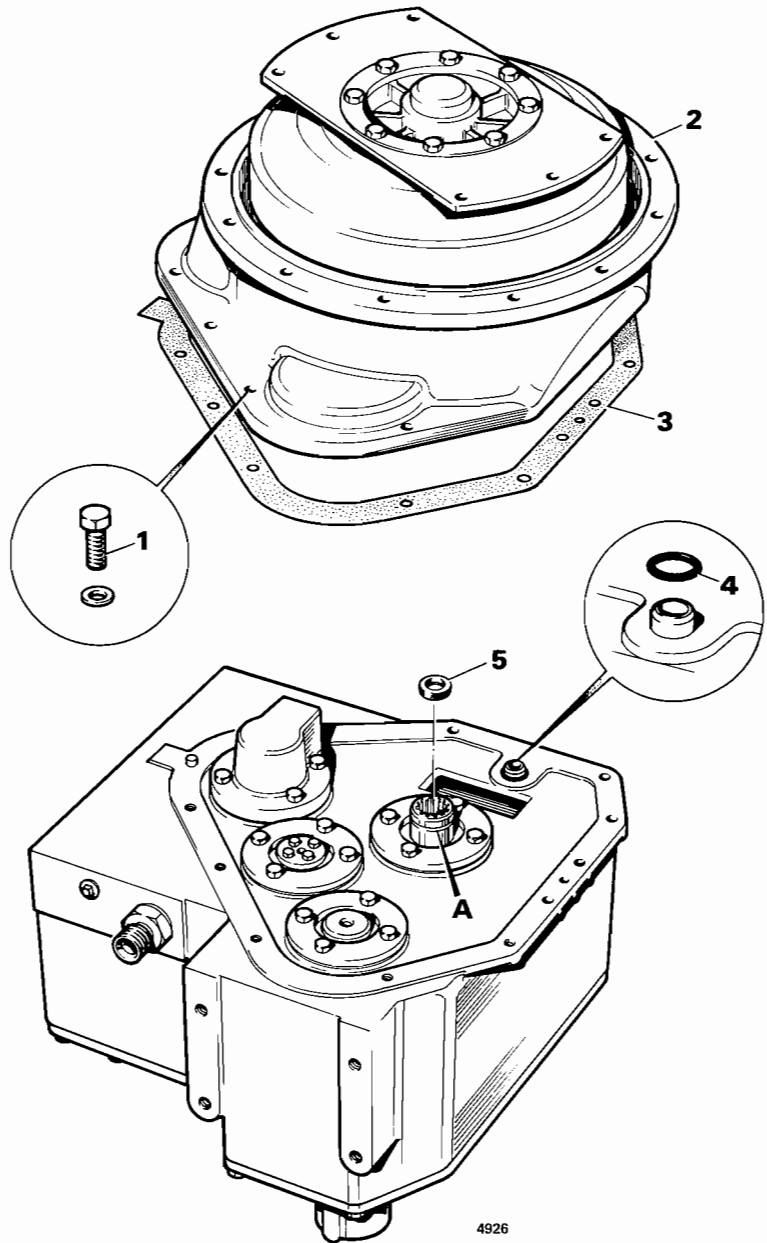
Renew all oil seals, gaskets and ring seal 26.

Fit reaction member 22 onto sleeve 25 with a clockwise rotational movement. The rounded blade ends must face the turbine 17 and if existing end plates 21 and 23 are re-used, they must be replaced in their original positions.

Ensure correct location of ears on thrust washers 15 and 20.

Fit new seal 8, lip leading into housing 7 and seal 5, lip trailing into gearbox input shaft.

Centralise ring seal A and retain with grease.



4926