

Fig 15.

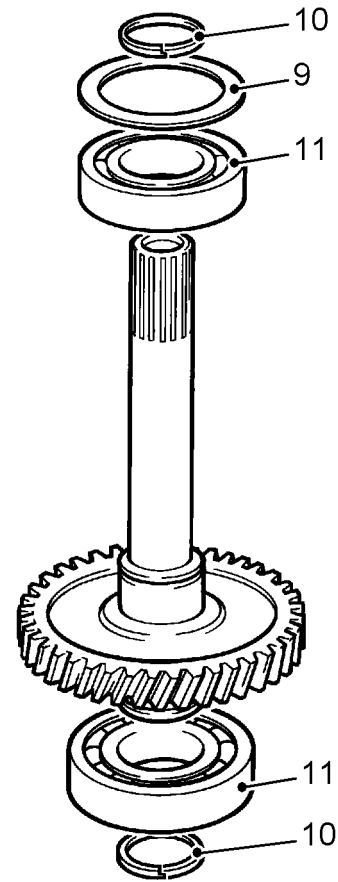


Fig 16.

- 11 Remove shim 9 and both rectangular rings 10.
- 12 Pry off both bearings 11 from the drive gear.

Note: Drive shaft and drive gear cannot be dismantled.

- 13 Loosen screwed joint and separate the converter compartment from the gearbox.

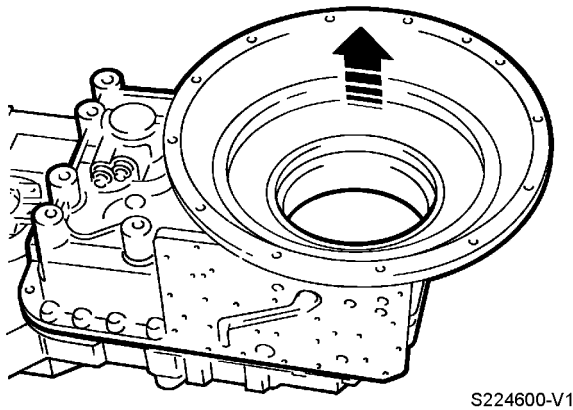


Fig 17.

Remove the countershaft gear as follows:

- 14 Loosen hex head screws 12.
- 15 Drive axle out of the housing bore, using striker 13.

Remove the released components.

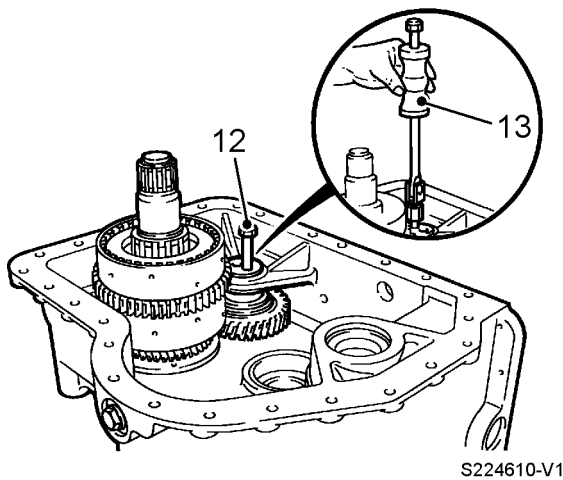


Fig 18.

- 16 Tilt housing 180°.

Open the beads 14 on both cover lids and pry them out of the housing bore.

- 17 Tilt Housing 180°.

Loosen both socket head screws in the bores.

- 18 Pry clutch K3/K4 15 out of the housing bore using a pry bar.

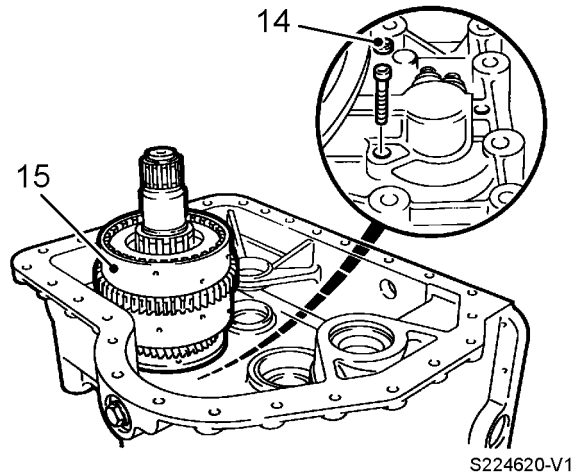


Fig 19.

Gearbox Dismantling

Remove clutch KR/K2 and KV/K1 as follows:

- 1 Pull bearing outer race of the clutch 1 KR/K2 out of the housing bore.
- 2 Remove shims 2 and 3 from KR/K2 and KV/K1.

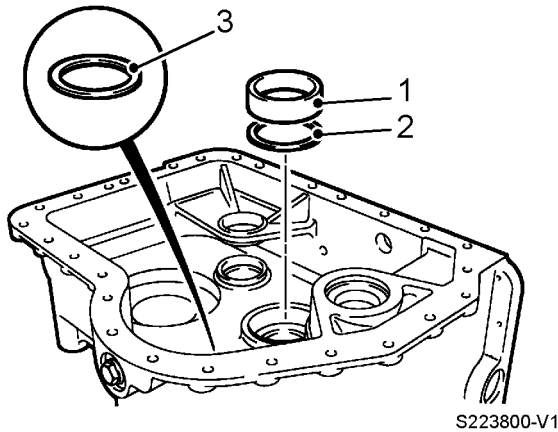


Fig 20.

- 3 Pry clutch KV/K1 4 out of the housing bore.
- 4 Lift clutch KR/K2 5 out of the housing.

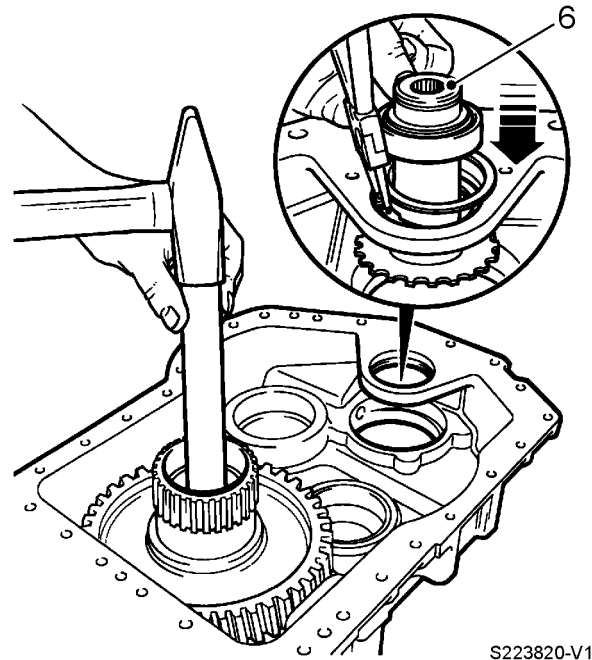


Fig 22.

- 7 Tilt housing 90°.
Remove circlip 7 and remove released shim 8.
- 8 Tilt housing 90°.
Remove spur gear K/3 9.
- 9 Remove circlip 10 and remove released shim 11.
- 10 Pull roller bearing 12 and bearing outer race 13 out of the housing bores.

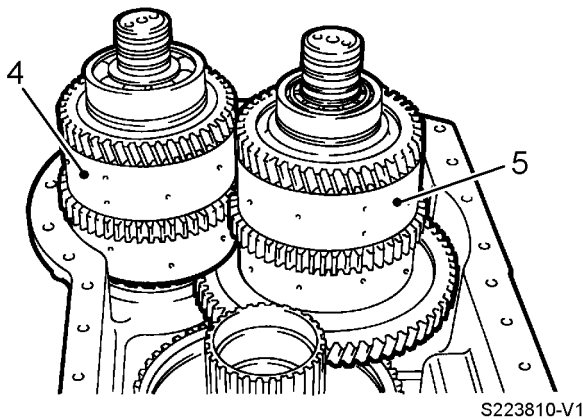


Fig 21.

Remove power take-off as follows:

- 5 Remove circlip and remove power take-off 6 in the direction of the arrow.
- 6 Drive cover lid out of the housing bore.

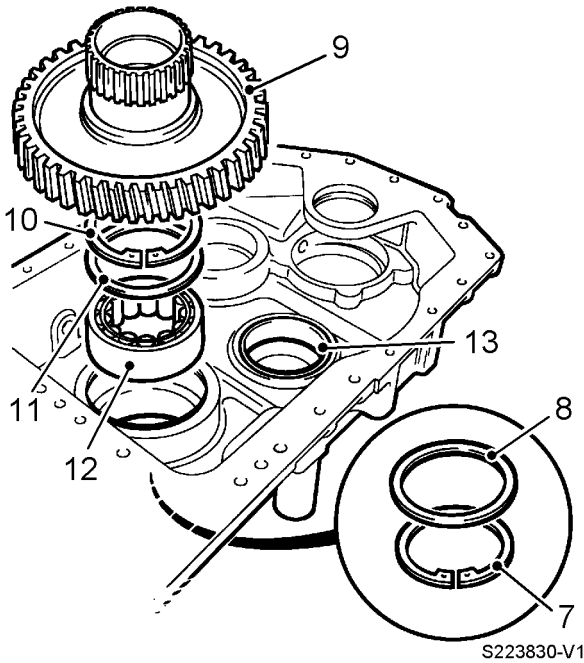


Fig 23.

Clutch K3/K4 - Dismantling

This section shows the Dismantling and Assembly of the K3/K4 clutch. A similar procedure is used for the other clutches KV/K1 and KR/K2.

- 1 Remove circlips 1 and 2 and remove both roller bearings.
- 2 Remove snap ring 3.
- 3 Remove plate pack.

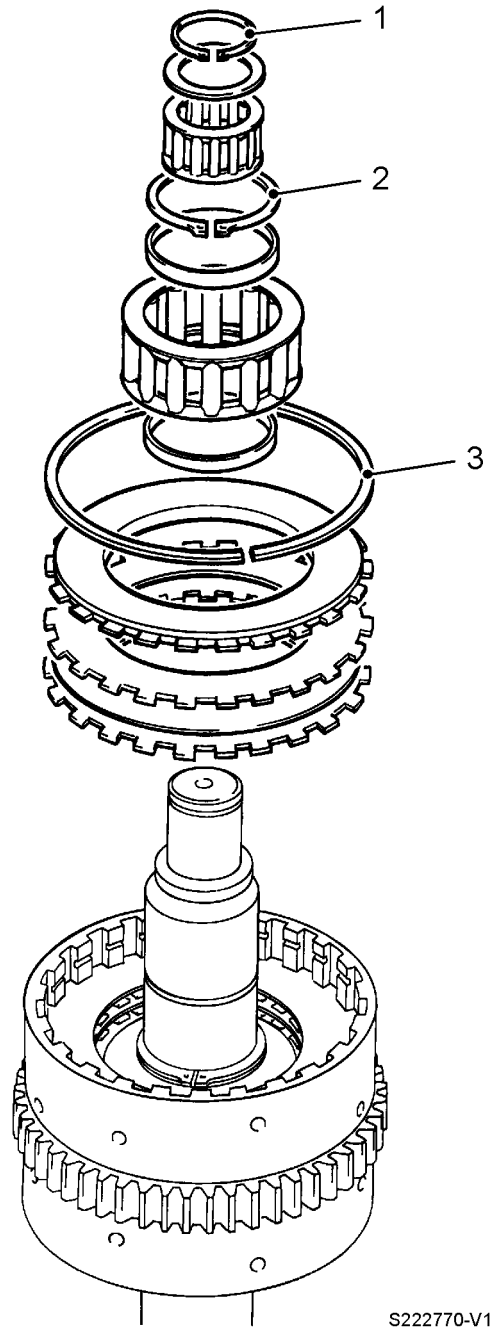


Fig 24.

- 4 Remove circlip 4, released shim 5 and cup spring pack 6.

5 Remove piston 7 using compressed air.

10 Pull off spur gear K4 11.

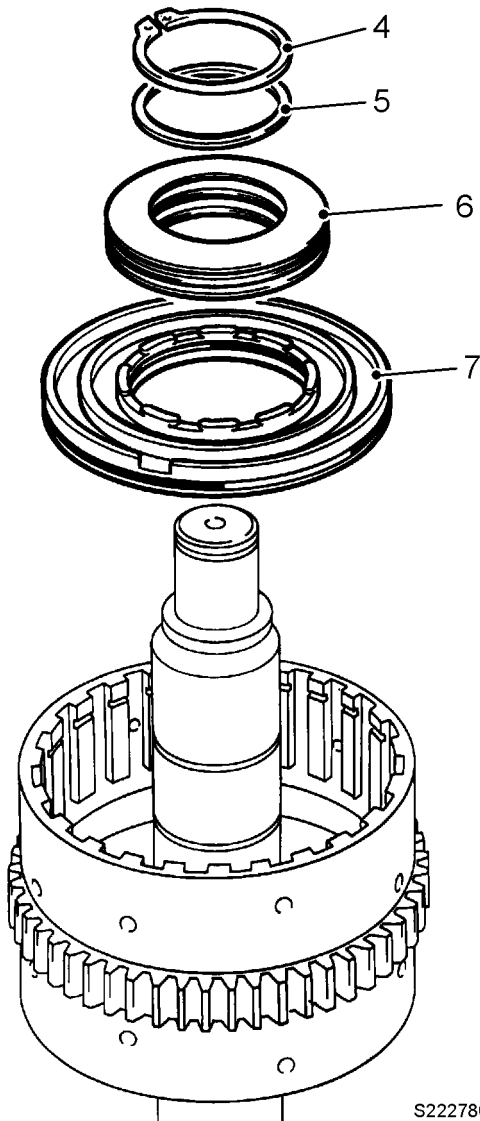


Fig 25.

6 Turn assembly through 180°.

7 Remove rectangular section rings 8.

8 Remove circlip 9.

9 Pull off bearing 10.

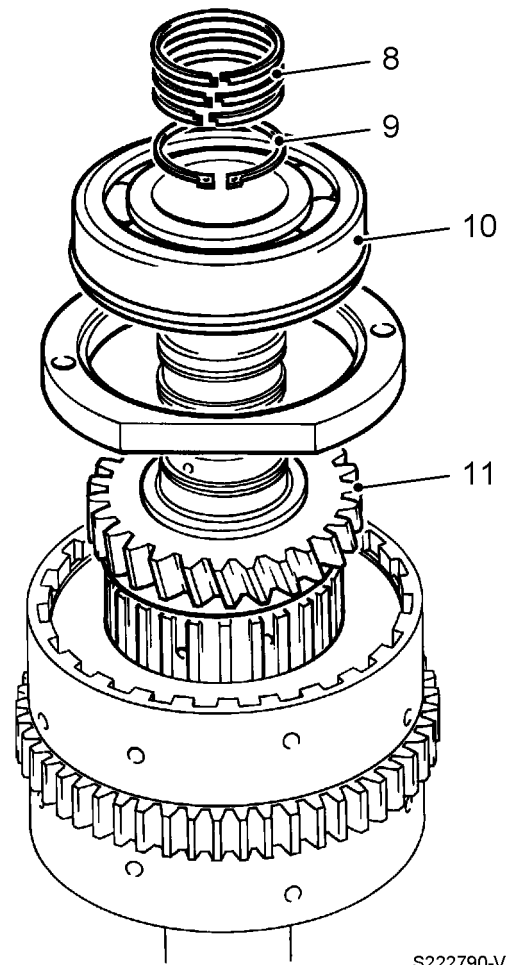


Fig 26.

11 Remove snap ring 12 and remove the plate pack.

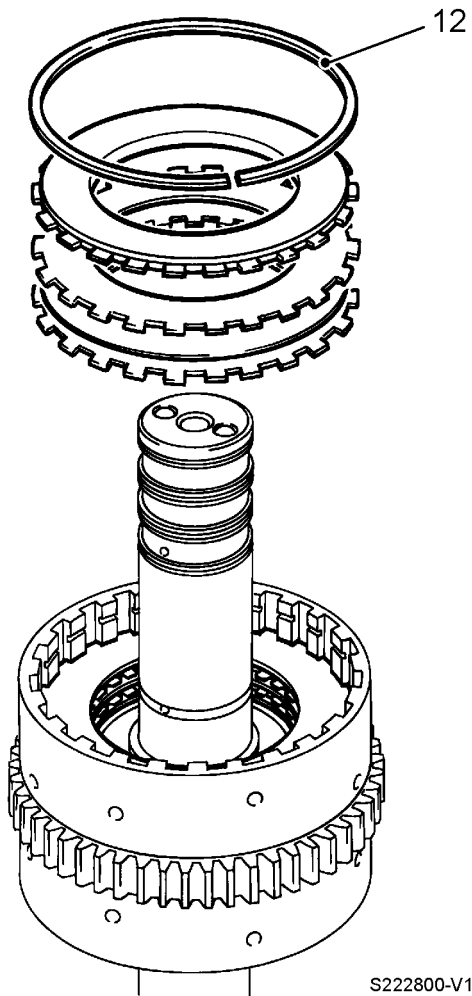


Fig 27.

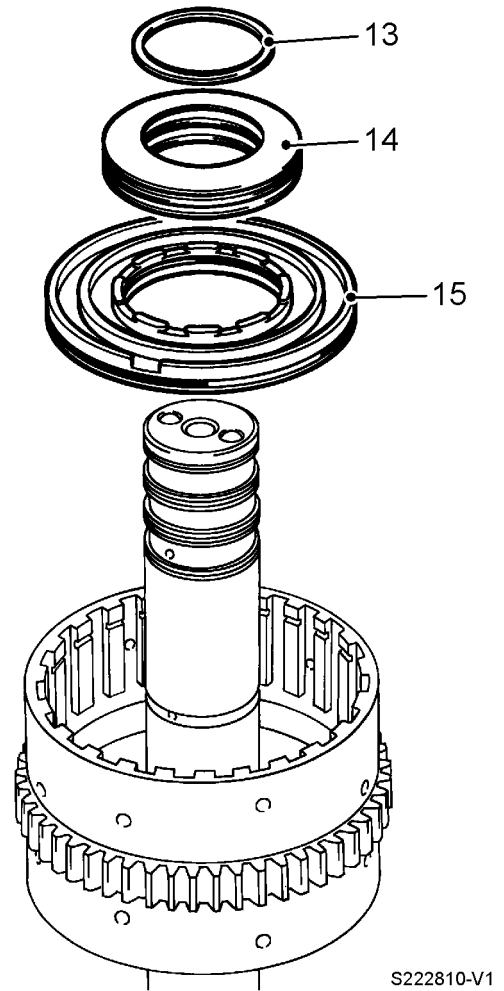


Fig 28.

12 Remove shim 13 and cup springs 14.

13 Remove the piston 15 using compressed air.

Note: The clutch cannot be further dismantled.