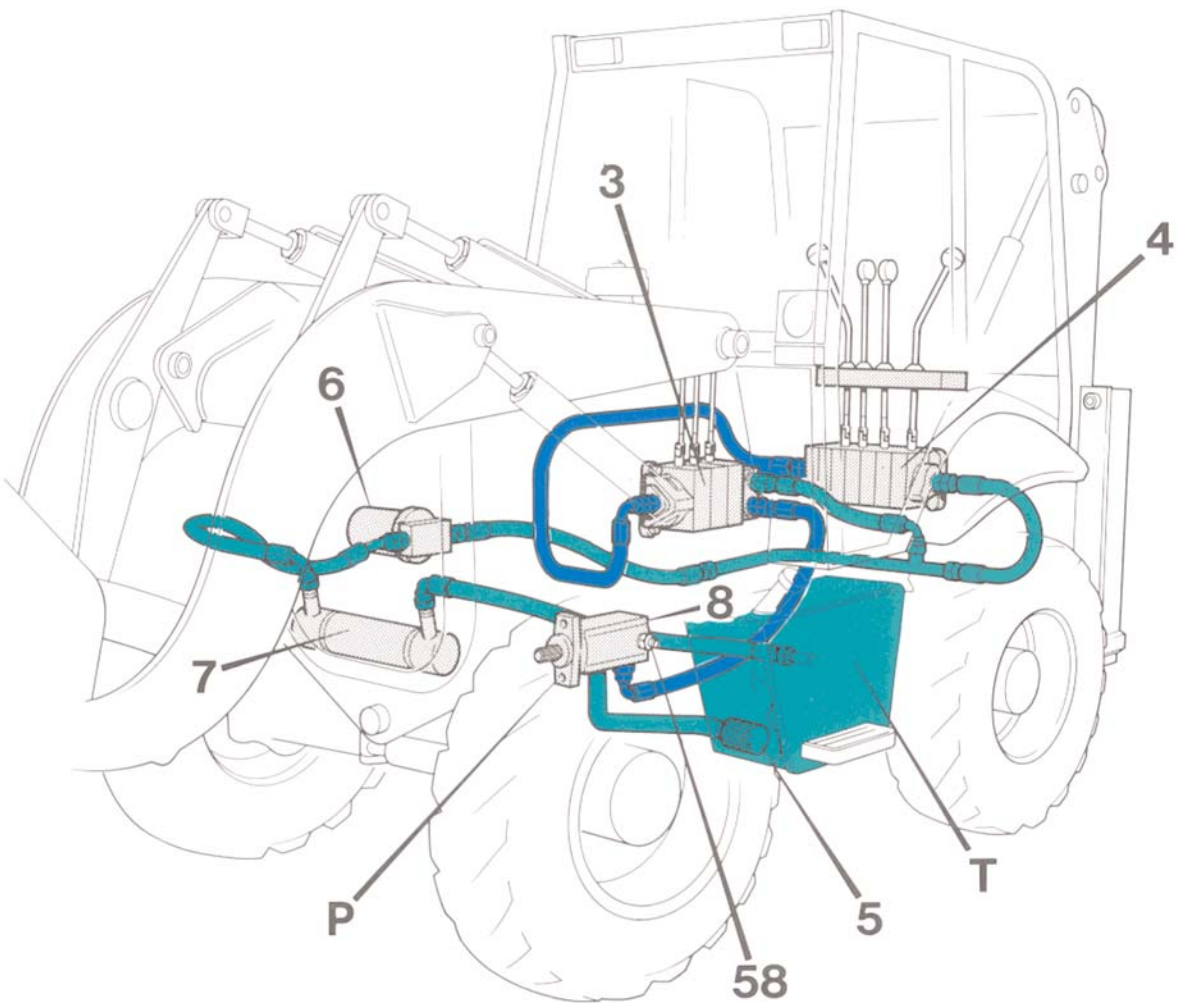


*** 2CXU (212SU North America Only)****Component Key**

- 1 Tank
- 2 Pump and Priority Valve
- 3 Loader Valve block (2 or 3 Spool)
- 3A Loader Shovel Ram Spool
- 3B Loader Lift Ram Spool with Float
- 3C Auxiliary /Quick Hitch Ram Spool
- 3D Main Relief Valve
- 3E Shovel Ram Head Side A.R.V.
- 3F Shovel Ram Rod Side A.R.V.
- 3G Auxiliary /Quick Hitch Ram Head Side A.R.V.
- 3H Auxiliary /Quick Hitch Ram Rod Side A.R.V.
- 3J Load Hold Check Valves
- 4 3 Point Hitch Valve Block
- 4A Lift/Lower/Float Spool
- 4B Pitch Spool
- 4C Tilt Spool
- 4D Auxiliary Spool
- 4E Lift ARV
- 4F Tilt ARV
- 4G Load Hold Check Valves
- 5 Suction Strainer
- 6 Filter
- 6A Filter By-pass Valve
- 7 Cooler
- 8 Pressure Test Connectors
- 9 Steer Valve
- 9A Steer Relief Valve
- 9B Steer Shock Valves
- 10 Steering Alignment Valve
- 11 Auxiliary Attachment Quick Release Couplings
- 13 Brakes Charge Valve
- 14 Accumulators
- 15 Brake Valve
- 16 Pressure Warning Switch
- 17 Front Brakes
- 18 Rear Brakes
- 20 Hydraulic Quickhitch
- 21 Quickhitch Locking Tap
- 22 Shovel Ram R.H.
- 23 Shovel Ram L.H.
- 24 Lift Ram R.H.
- 25 Lift Ram L.H.
- 26 Auxiliary Cylinder
- 27 Tilt Cylinder
- 28 Pitch Cylinder
- 29 Lift Cylinder
- 30 2/4 Wheel Steer Selector Valve
- 31 Front Steer Cylinder
- 32 Rear Steer Cylinder
- 40 Anti-cavitation Valve



9808/9053