

Dismantling and Assembly

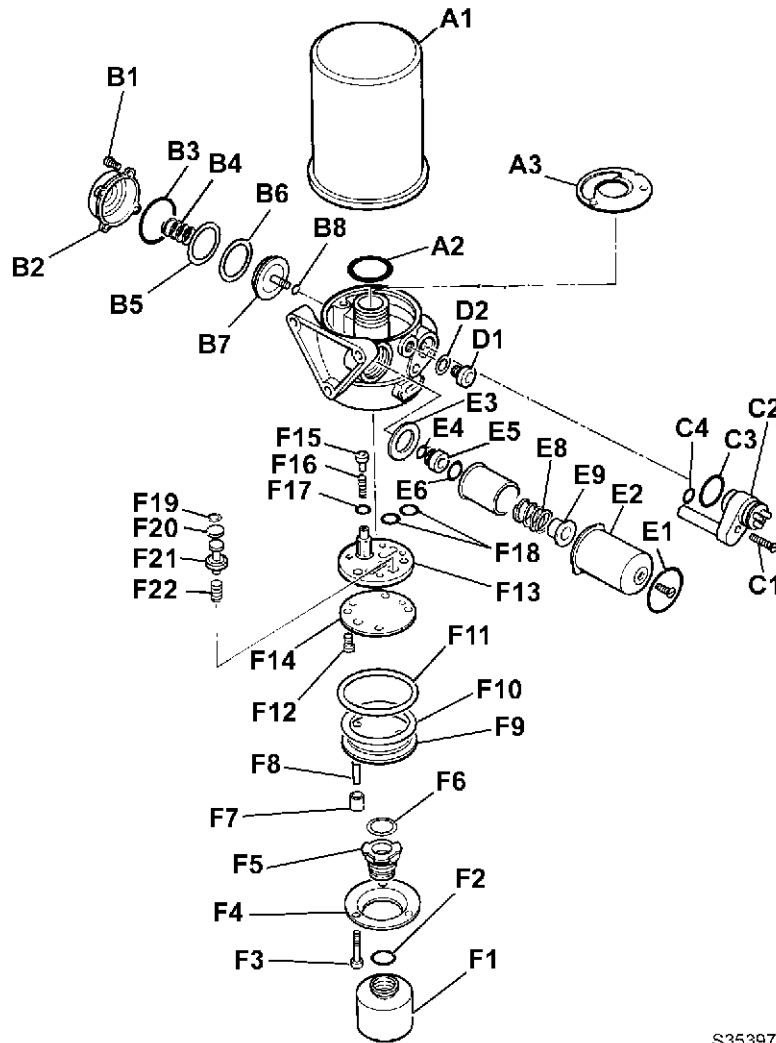
The numerical sequences on the illustration are intended as a guide to dismantling.

Assembly is the reverse of dismantling.

To replace the desiccant canister (*see Service Schedule, Section 3*) unscrew item **A1**. Secure the replacement canister hand tight.

Items **E1** to **E9** - all are held in place by circlip **E1**. After releasing the circlip, take care to prevent the rest of the components flying apart.

Items **F1** to **F22** - **F1** is a push fit into the base of the air dryer body.



S353970

Fig 24.

Circuit Protection Valve

Removal and Replacement

Removal

Important: Refer to **Safety** at the beginning of this section before proceeding further.

WARNING

Before working on the brake system make sure the machine is on level ground and chock all four wheels.

BRAK-1-4

Note: The pressure settings of the circuit protection valve are factory-set. Adjustment and repairs are not permitted in service. If the fault finding procedure indicates a fault in this valve, a new unit must be fitted.

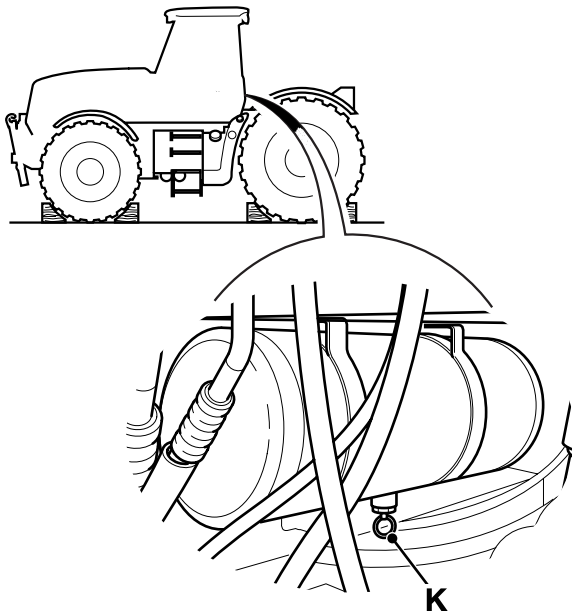
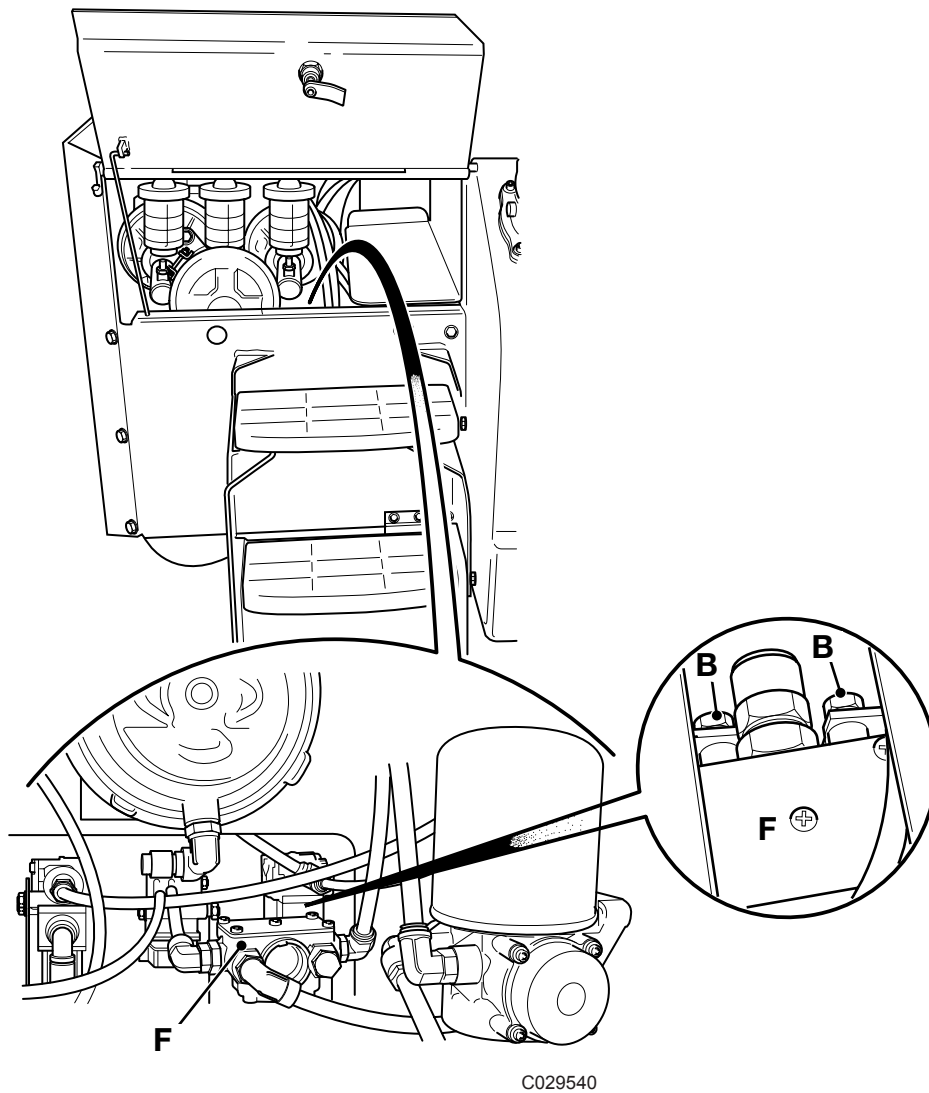


Fig 25.

- 1 Release the system air pressure as follows:
 - a Grip the “keyring” fitting **K** and pull sideways until all air is released
 - b Repeatedly press the foot brake pedal until the stored pressure in the front and rear air reservoirs is exhausted
- 2 Disconnect the hoses from the ports by first pushing in the hose, then pushing in the sleeve in the elbow or adapter, and then pulling out the hose. Blank the open ports to prevent entry of dirt and label the hoses to assist correct refitting.



C029540

Fig 26.

- 3 Remove the two mounting screws **B** and lift the valve **F** clear.

Torque Settings

Replacement

Reverse the Removal procedure.

When fitting elbows, clean the threads and apply Clayton System Seal SC1251.

Item	Nm	kgf m	lbf ft
B	20	2.0	15