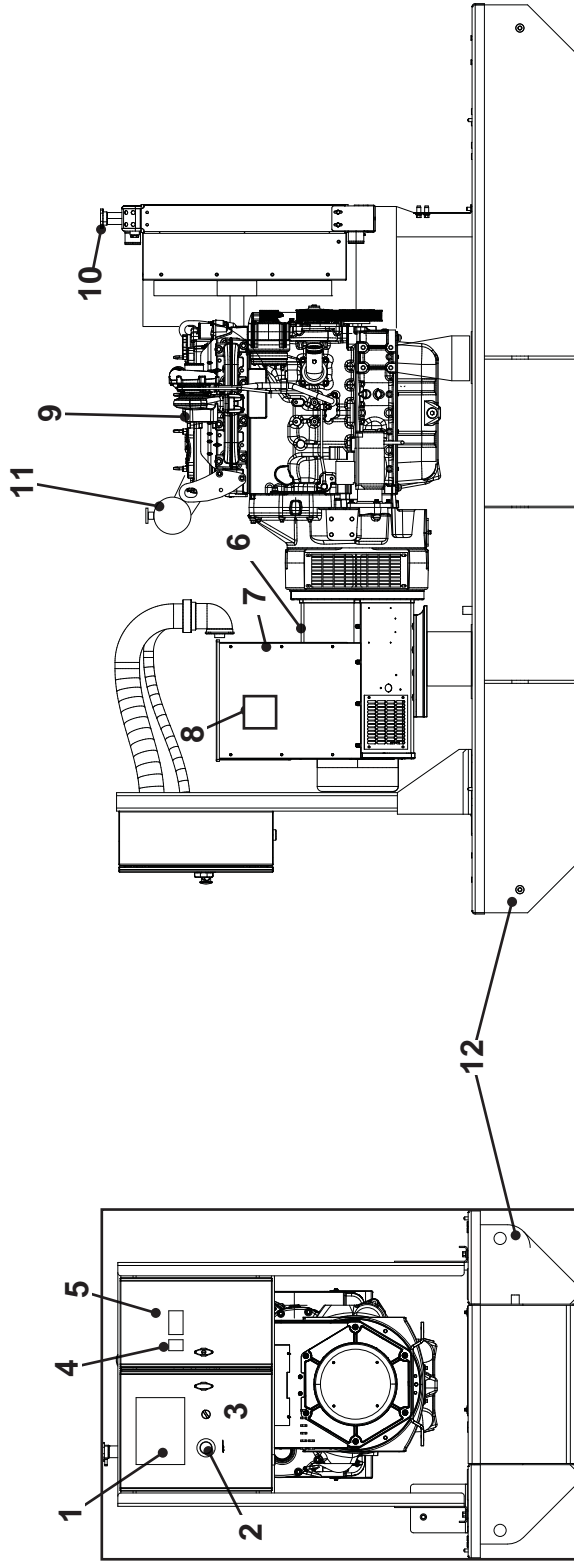


Component Identification



C060300-B1

Fig 1.

Table 1. Component Key

12 Base with Integrated Fuel Tank

- 1 Control Panel
- 2 Emergency Stop
- 3 Panel On/Off Switch
- 4 Earth Leakage Relay (option)
- 5 Circuit Breaker
- 6 Alternator
- 7 Alternator Terminal Box
- 8 Automatic Voltage Regulator
- 9 Engine
- 10 Coolant Cap
- 11 Air Filter

Data plate

The data plate details the model designation, rating, fuel type, weight, year of manufacture, output rating and other generating set specific information. The data plate is normally located on the right hand side of the alternator

terminal box (looking at the alternator end of the generator).

The generator model designation can be used to determine the version of generating set:

Generator Set identification nomenclature:

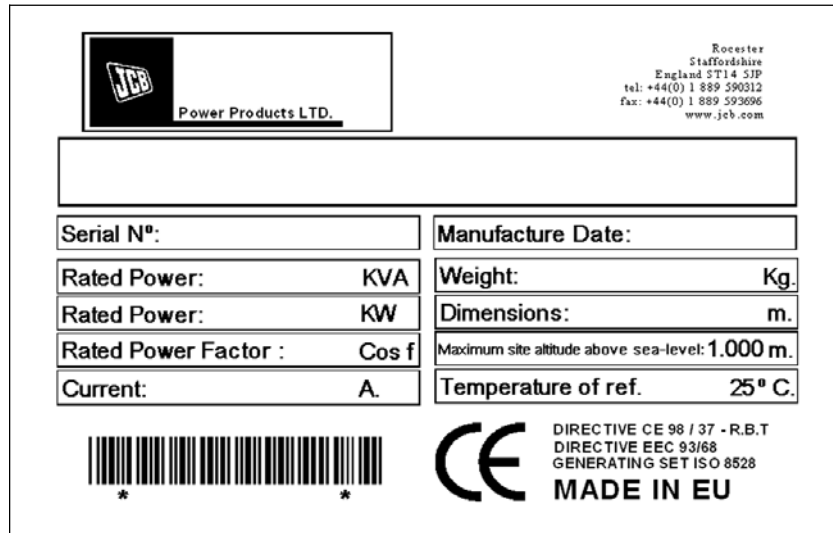


Fig 2.

T039250

- A Manufacturer (JCB Power Products Ltd.)
- B Model Name
- C Machine Serial Number
- D Rated Power (KVA)
- E Rated Power (KW)
- F Rated Power Factor (Cos f)
- G Current (A)
- H Manufacture Date
- J Weight (wet) (kg)
- K Dimensions (m)
- L Maximum site altitude above sea level (1000m)
- M Temperature of ref. (25 deg C)

Important Information

T1-015

The Operator Manual

WARNING

Study the Operator Manual before starting the machine. You must understand and follow the instructions in the Operator Manual. You must observe all relevant laws and regulations. If you are unsure about anything, ask your JCB dealer or employer. Do not guess, you or others could be killed or seriously injured.

INT-1-1-1_2

Do not operate the machine without an Operator Manual.

Treat the Operator Manual as part of the machine. Keep it clean and in good condition. Replace the Operator Manual immediately if it is lost, damaged or becomes unreadable.

Safety Warnings



This safety alert system identifies important safety messages in this manual. When you see this symbol, be alert, your safety is involved, carefully read the message that follows, and inform other operators.

In this publication and on the machine, there are safety notices. Each notice starts with a signal word. The signal word meanings are given below.

DANGER

Denotes an extreme hazard exists. If proper precautions are not taken, it is highly probable that the operator (or others) could be killed or seriously injured.

INT-1-2-1

WARNING

Denotes a hazard exists. If proper precautions are not taken, the operator (or others) could be killed or seriously injured.

INT-1-2-2

CAUTION

Denotes a reminder of safety practices. Failure to follow these safety practices could result in injury to the operator (or others) and possible damage to the machine.

INT-1-2-3

Safety, Yours and Others

All machinery, whether mobile or static can be hazardous. When equipment is correctly operated and properly maintained it can be safe to work with. But when it is carelessly operated or poorly maintained it can become a danger.

Do not work with any equipment until you are sure that it is serviceable, that you know how to control it and be aware of all relevant safety requirements.

If the equipment covered by this manual forms part of a larger product (e.g a vehicle) be sure to observe the safety requirements which relate to the product as a whole, as well as those given in this manual.

On this and the following pages and throughout this manual, you will find safety messages. Please read and understand these safety messages before using and working on the equipment covered in this manual.

Make sure you also read and understand all other safety messages contained in operator handbooks and service manuals concerned with the product of which this equipment form part.

Remember

BE CAREFUL

BE ALERT

BE SAFE

Checklists

General Safety

The following safety checklist is intended to help remind you of safety procedures and practices.

SAFETY IS YOUR RESPONSIBILITY

You must also refer to local regulations in the country your equipment is being used in. Some of the information may be repeated in the following warnings and cautions pages and in the main text.

- Do not change the application or specification of the engine.
- Install the engine in accordance with recommendations made in the Engine Installation Manual.
- Do not lift heavy objects on your own, use lifting equipment or obtain the help of an assistant.
- Do not smoke when adding fuel to the tank or working in the engine bay area.
- Always clean up spilt fluids, dispose of fluids, contaminated material etc. in accordance with local regulations. Do not pollute drains or the ground.
- Use the right tools for the job.
- Always make the equipment safe before completing any maintenance tasks, for instance disconnect the battery so that the engine can not be started.
- Allow engine components to cool before attempting any maintenance tasks, components such as the exhaust can become extremely hot.
- Do not adjust the engine, or add fuel, oil whilst it is running unless procedures in this manual instruct you to do so.
- Do not siphon fluids by mouth.
- Operate the engine in well ventilated areas, if using indoors then a purpose designed exhaust fume extraction unit may be needed.
- Keep other people at a safe distance when operating the engine or equipment.
- Do not operate an engine if the safety guard (when applicable) has been removed.
- Vapours from solvents, thinners and adhesives can be high flammable. In addition to fire risk, they can be toxic and in certain conditions cause unconsciousness, or death if inhaled. Use these items in well ventilated areas.
- Seek medical advice immediately if your skin contacts high pressure fuel.
- Make sure the engine is operated by one person correctly positioned at the controls.
- Do not operate the engine at high speeds with no load applied.
- Make sure you have adequate fire fighting equipment in your workshop, repair area. Contact your local fire prevention officer for advice.
- Turbocharger impeller blades operate at extremely high revolutions and the turbocharger unit becomes very hot. Allow the unit to cool before completing any maintenance. Keep tools and objects away from the impeller when the unit is operating.
- Use only JCB recommended parts. These parts have been designed to give the engine its optimum performance. Using spurious parts may affect the integrity of the engine

WARNING

Decals

Decals on the machine warn you of particular hazards. You can be injured if you do not obey the decal safety instructions.

Each decal is attached close to a part of the machine where there is a possible hazard. Make sure replacement parts include warning decals where necessary.

Keep all decals clean and readable. Replace lost or damaged decals. Each decal has a part number printed on it, use this number to order a new decal from your JCB distributor.

INT-3-3-3_1

WARNING

Care and Alertness

All the time you are working with or on the machine, take care and stay alert. Always be careful. Always be alert for hazards.

INT-1-3-5