

### Machine Identification Plate

The machine has an identification plate mounted as shown. → Fig 1. (□ 1-3-3). The serial numbers of the machine and its major units are stamped on the plate.

**Note:** The machine model and build specification is indicated by the PIN.

The serial number of each major unit is also stamped on the unit itself. If a major unit is replaced by a new one, the serial number on the identification plate will be wrong. Either stamp the new number of the unit on the identification plate, or simply stamp out the old number. This will prevent the wrong unit number being quoted when replacement parts are ordered.

The machine and engine serial numbers can help identify exactly the type of equipment you have.

GET	Gatersleben, Germany
PUN	Pune, India
SHA	Shanghai, China
JBP	JCB Branded Products

#### 2 Machine Model (3 Digits)

Standard Builds
5AA = 531-70
5AB = 535-95
5AC = 536-60
5AD = 541-70
5AF = 540-170
5AG = 550-140
5AH = 533-105
5AL = 540-140
5AM = 550-170
5AN = 535-125 HiViz
5AP = 535-140 HiViz
5AR = 536-70
5AS = 526-56
5AT = 527-58 Low Cab
5AV = 527-58 High Cab
5AW = 550-80
5AX = 540-200
5CD = 506-36
5CE = 507-42
5CF = 509-42
5CG = 510-56
5CH = 512-56
5CJ = 514-56
5MN = 535-125 MP <sup>(1)</sup>
5MP = 535-140 MP <sup>(1)</sup>

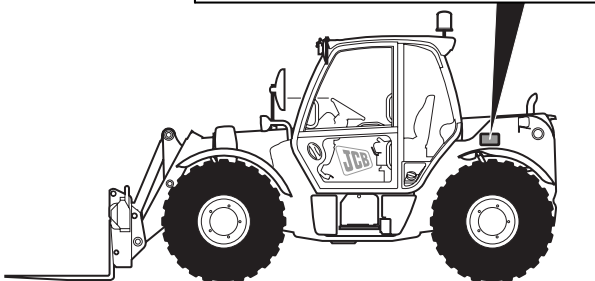
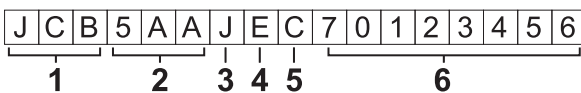


Fig 1.

420811

### Typical Product Identification Number (PIN)



T011100-C1

#### 1 World Manufacturer Identification (3 Digits)

JCB	UK
GEO	Georgia, US
HAR	Haryana, India
SOR	Sorocaba, Brazil

(1) Man Platform Variant - Refer to Service Manual Supplement - 9813/1400

European Tractor Type Approved Builds:	
5TA = 531-70	5TD = 535-95
5TB = 541-70	5TE = 536-70
5TC = 536-60	5TW = 550-80
	5UW = 550U80



## Section 1-3 - General Information Machine Identification

Machine Identification Plate

### 3 Engine Type (1 Digit)

	JCB Dieselmex (Tier 3):
	P = Turbocharged and intercooled, 85kW (114Hp)
	R = Turbocharged and intercooled, 97kW (130Hp)
	S = Turbocharged, 74.2kW (100Hp)
	T = Turbocharged, 63kW (85Hp)
	V = Turbocharged and intercooled, 108 kW (145Hp)

	JCB Ecomax (Tier 4):
	W = Turbocharged and intercooled, 55kW (74Hp)
	X = Turbocharged and intercooled, 81kW (109Hp)
	Y = Turbocharged and intercooled, 93kW (125Hp)
	Z = Turbocharged and intercooled, 108kW (145Hp)

### 4 Gearbox Model (1 Digit)

**Table 3. Powershift/SyncroShuttle Transmission**

	E = 3 Speed (PS750)	J = 6 Speed (PS760)
	F = 3 Speed (PS760)	M = 4 Speed (SS700)
	G = 4 Speed (PS750)	N = 4 Speed (PS750 - 40 KPH)
	H = 4 Speed (PS760)	

**Table 4. HydroStatic Transmission**

	P = 20 Kph
	R = 25 Kph
	S = 34 kph
	T = 40 Kph

### 5 Randomly generated check letter (1 Digit)

### 6 Machine Serial Number (8 Digits)

Each machine has a unique serial number.

### European Tractor Type Approved Builds

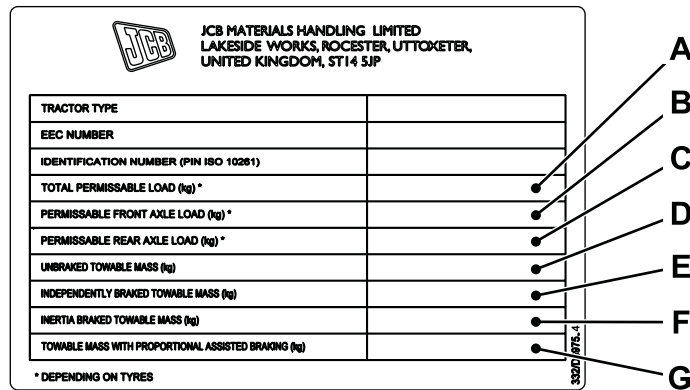


Fig 2.

332-d6975-4

Table 5. Machines with SA/SB/SC/SD/SE/SF Engines

Item	531-70	535-95	536-60	536-70	541-70	550-80
	kg (lb)	kg (lb)	kg (lb)	kg (lb)	kg (lb)	kg (lb)
<b>A</b> Total Permissible Mass	8200 (18073)	8500 (18734)	8200 (18073)	8350 (18403)	8400 (18513)	TBA
<b>B</b> Permissible Front Axle Load <sup>(1)</sup>	From 2400 (5291)	2400 (5291)	2400 (5291)	2400 (5291)	2400 (5291)	TBA
	To 6600 (14550)	7300 (16093)	6200 (13668)	7000 (15432)	7000 (15432)	TBA
<b>C</b> Permissible Rear Axle Load <sup>(1)</sup>	From 2400 (5291)	2400 (5291)	2400 (5291)	2400 (5291)	2400 (5291)	TBA
	To 6600 (14550)	7300 (16093)	6200 (13668)	7000 (15432)	7000 (15432)	TBA
<b>D</b> Unbraked Towable Mass	750 (1653)	750 (1653)	750 (1653)	750 (1653)	750 (1653)	TBA
<b>E</b> Independently Braked Towable Mass	6000 (13227)	6000 (13227)	6000 (13227)	6000 (13227)	6000 (13227)	TBA
<b>F</b> Inertia Braked Towable Mass	3500 (7716)	3500 (7716)	3500 (7716)	3500 (7716)	3500 (7716)	TBA
<b>G</b> Towable Mass Fitted with a Proportional Assisted Braking System						
	10 Tonne Hydraulic Hitch	10000 (22040)	10000 (22040)	10000 (22040)	10000 (22040)	TBA
	Rockinger/Tractor Hitch	17800 (39231)	17100 (37699)	17800 (39231)	17250 (38019)	17200 (37909)



## Section 1-3 - General Information Machine Identification

Machine Identification Plate

(1) *Dependent on tyres option.*

**Table 6. Machines with SH/SL/DH Engines**

Item	5TA	5TB	5TC	5TD	5TE	5UW	
	531-70	535-95	536-60	536-70	541-70	550-80	
	kg (lb)	kg (lb)	kg (lb)	kg (lb)	kg (lb)	kg (lb)	
<b>A</b> Total Permissible Mass	9000 (19836)	10250 (22591)	9000 (19836)	10250 (22591)	10250 (22591)	12005 (26459)	
<b>B</b> Permissible Front Axle Load <sup>(1)</sup>	From	2400 (5291)	2400 (5291)	2400 (5291)	2400 (5291)	2400 (5291)	
	To	6580 (14502)	7500 (16530)	6400 (14105)	7500 (16530)	7500 (16530)	9000 (19836)
<b>C</b> Permissible Rear Axle Load <sup>(1)</sup>	From	2400 (5291)	2400 (5291)	2400 (5291)	2400 (5291)	2400 (5291)	
	To	6580 (14502)	7500 (16530)	6400 (14105)	7500 (16530)	7500 (16530)	9000 (19836)
<b>D</b> Unbraked Towable Mass	750 (1653)	750 (1653)	750 (1653)	750 (1653)	750 (1653)	750 (1653)	
<b>E</b> Independently Braked Towable Mass	6000 (13227)	6000 (13227)	6000 (13227)	6000 (13227)	6000 (13227)	6000 (13227)	
<b>F</b> Inertia Braked Towable Mass	3500 (7716)	3500 (7716)	3500 (7716)	3500 (7716)	3500 (7716)	3500 (7716)	
<b>G</b> Towable Mass Fitted with a Proportional Assisted Braking System							
	10 Tonne Hydraulic Hitch	10000 (22040)	9800 (21819)	10000 (22040)	9360 (20629)	9800 (21819)	7660 (16882)
	Rockinger/Tractor Hitch	17800 (39231)	16700 (37027)	17800 (39231)	15300 (33721)	16700 (37027)	11200 (24684)

(1) *Dependent on tyres option.*

### Component Identification Plates

#### Typical Engine Identification Number

Engine data labels **A** are located on the cylinder block at position **C** and rocker cover **D** (if fitted). The data label contains important engine information and includes the engine identification number **E**.

A typical engine identification number is explained as follows:

**SD 320/40001 U 00001 04**  
**1 2 3 4 5**

#### 1 Engine Type

SD = turbocharged

SE = electronic common rail fuel injection, turbocharged and intercooled.

SF = turbocharged and intercooled.

SH = 4.4 litre electronic common rail fuel injection with Variable Geometry Turbocharger (81kW, 93kW)

SL = 4.4 litre electronic common rail fuel injection with Fixed Geometry Turbocharger (55kW)

DH = 4.8 litre electronic common rail fuel injection with Variable Geometry Turbocharger (108kW)

#### 2 Engine part number

#### 3 Country of manufacture

U = United Kingdom

#### 4 Engine Serial Number

#### 5 Year of Manufacture

The last three parts of the engine identification number are stamped on the cylinder block at position **B**.

**U 00001 04**

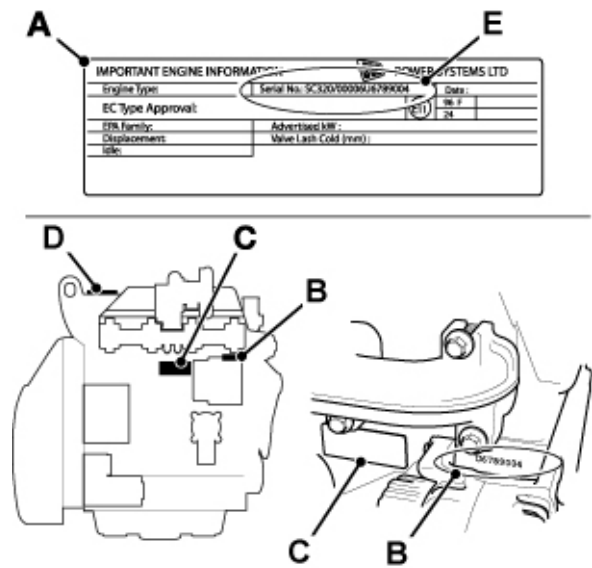


Fig 3. Engine

C007280-C5.jpg

### Transmission Identification Numbers

#### Axles (Excluding 550-80 Machines)

The transmission components have a serial number stamped on a data plate **A** as shown.

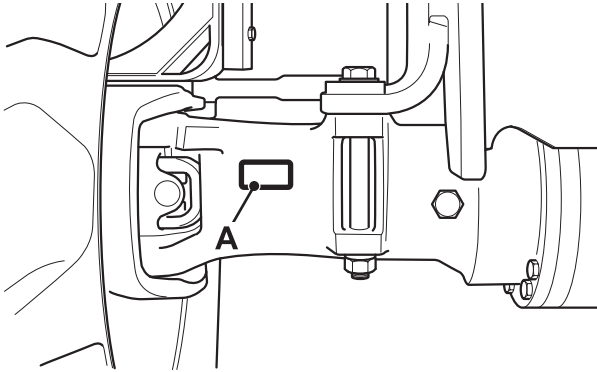


Fig 4. Front Axle

A710840-C1

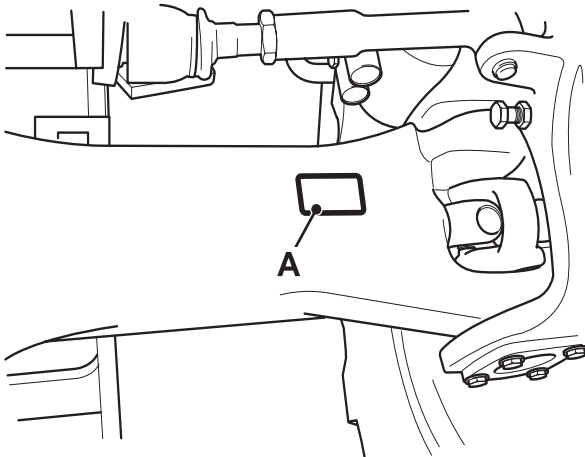


Fig 5. Rear Axle

A710830-C1

#### Axles (550-80 Machines)

The axles have a serial number stamped on a data plate label **A** as shown.

To view the front axle data plate remove the cover **B** and the plate will be visible through hole **C**.

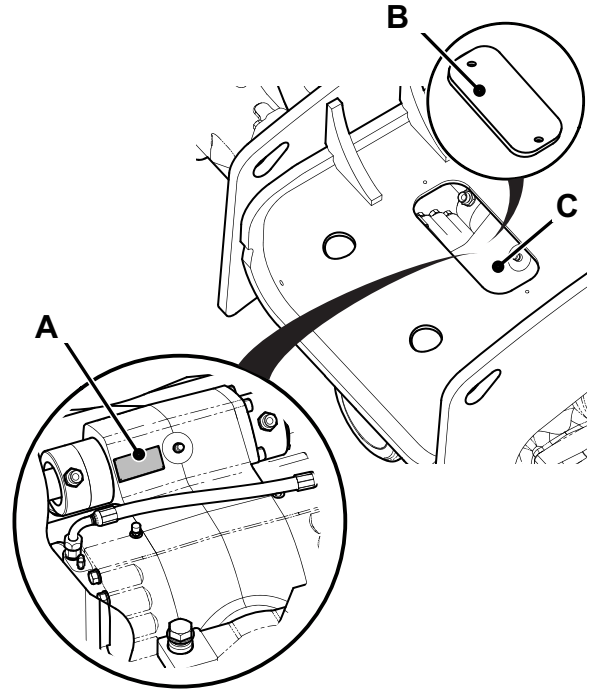


Fig 6. Front Axle

C107510

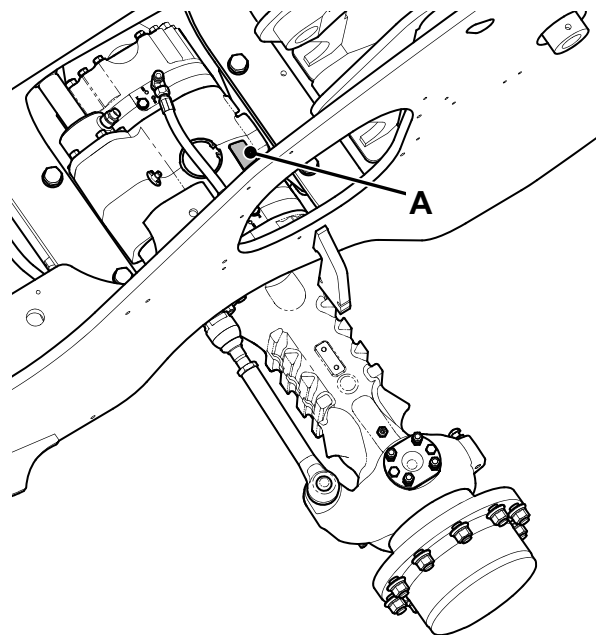
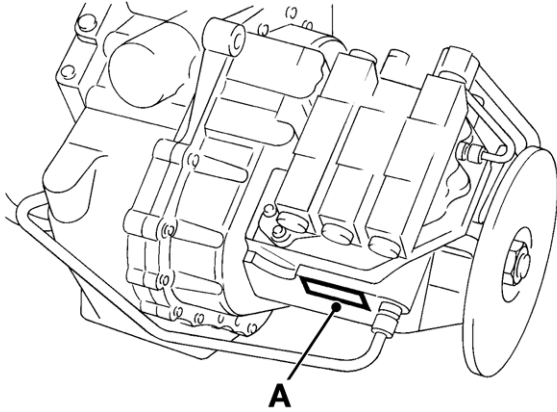


Fig 7. Rear Axle

C107520

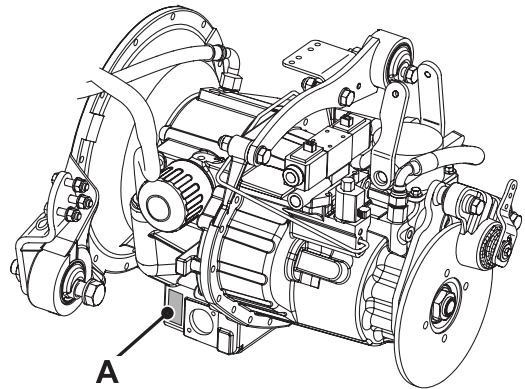
#### Gearbox

The transmission components have a serial number stamped on a data plate **A** as shown.



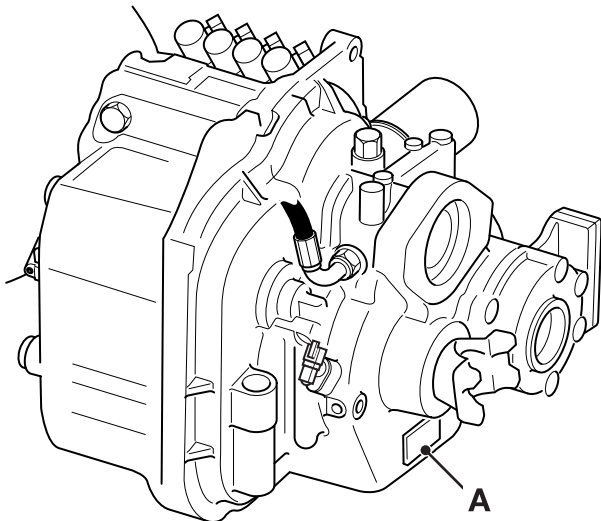
**Fig 8. PS750 Powershift Transmission**

263370-C1



**Fig 10. SS700 Transmission**

C007640



**Fig 9. PS760 Powershift Transmission**

A401030-C2

### HydroStatic Transmission Components

#### Transmission Pump

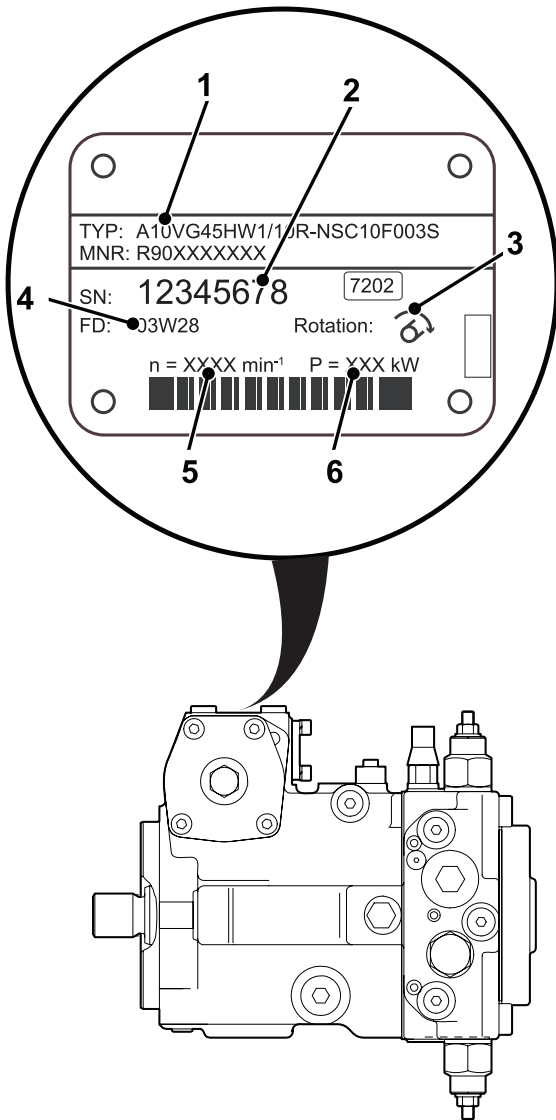


Fig 11.

C094930

1 Ordering Code

Code	Machine
AA4VG56	20 and 34 kph
AA10VG63	25 kph
AA4VG71	40 kph

2 Pump Serial Number (8 Digits)

Each motor has a unique serial number.

3 Direction of rotation - looking at the shaft.

4 Date of manufacture.

5 Speed.

6 Power.

#### Transmission Motor

1 Motor Serial Number (6 Digits)

Each motor has a unique serial number.

2 Type

3 Date of manufacture.

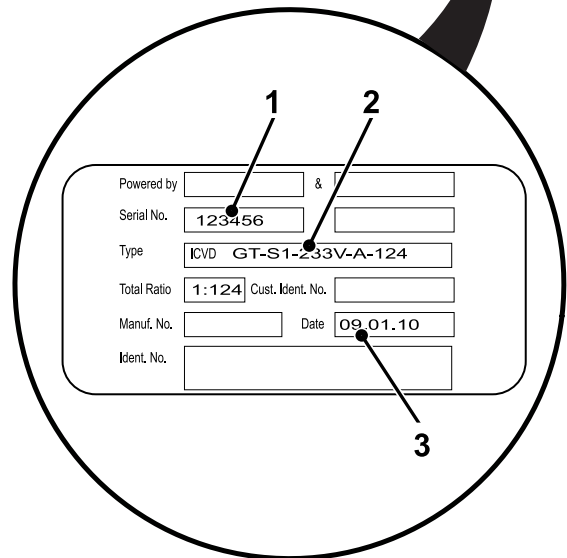
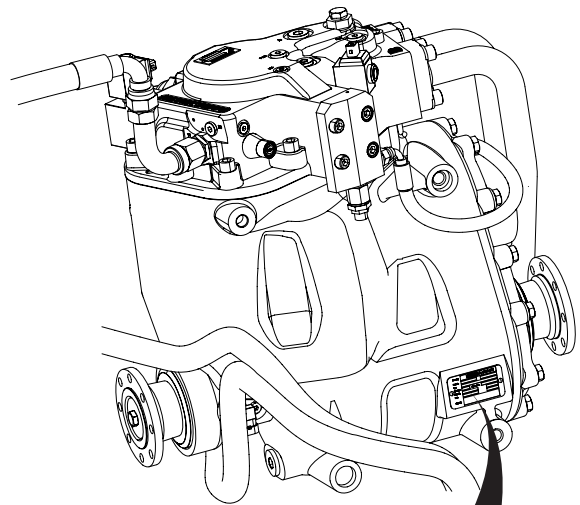


Fig 12.

C094920