

Fig 46.

C074410

- 17 Fit the external circlip to each gland bearing.

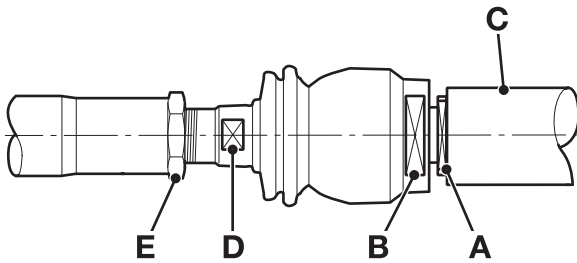


Fig 47.

A311970-B1

- 18 Apply JCB Threadlocker and Sealer to threads at **A**. Refit the inner ball joints and track rod ends, using spanners on flats **A**, **B**, **D** and **E** as required.

Important: The piston rod operates at full length, any damage to the surface will cause fluid leaks. DO NOT attempt to grip the rod diameter **C** with pipe grips.

Torque Settings

Important: Recheck the torque tightness after a short road test.

Item	Nm (lbf ft)
E ⇒ Fig 47. (□ H-32)	410 (300)

GPS Control Valve

Removal and Replacement

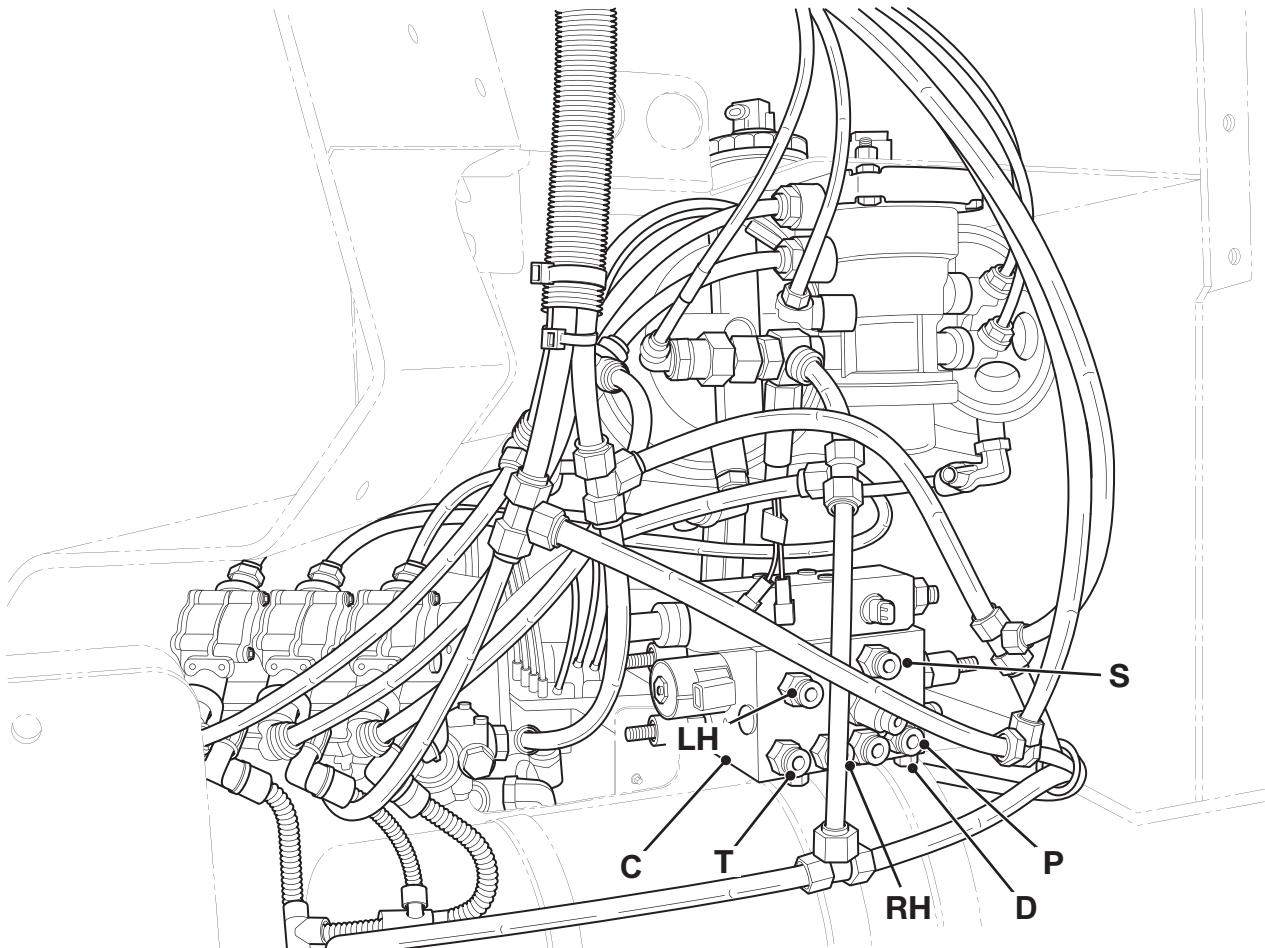


Fig 48.

C100970

WARNING

Make the machine safe before getting beneath it. Park the machine on level ground and lower the attachments. Stop the engine and remove the starter key. Make sure the park brake is engaged. Disconnect the battery to prevent the engine being started. Block all four wheels before getting under the machine.

3-3-1-1

CAUTION

Do not turn the steering to full lock with any steering linkage disconnected, otherwise the steering limiters will be damaged and must be renewed.

13-3-2-18_1

WARNING

When gaining access for maintenance work, make sure no-one is in a position to be trapped by the wheels as the steering wheel is turned.

13-3-2-15

Removal

Locate the valve in the right hand pannier.

Note: On machines fitted with chocks, the chock carrier will restrict access to the valve. If necessary, remove the chocks, remove two bolts and remove chock holder from the chassis.

Before disconnecting hoses, label them to assist correct refitting. → [Table 5. Hose Connections \(H-34\)](#) Blank the open ports to prevent loss of oil and entry of dirt.

Support the valve **C** and remove four screws **D**.

Replacement

Reverse the removal procedure.

Check the pressure settings. [⇒ Pressure Testing \(□ H-32\)](#)

Table 5. Hose Connections

Valve Port	Connection
LH	Power track rod hose A
RH	Power track rod hose B
P	Feed from pump
S	To steering box
T	To tank

Torque Settings

Item	Nm (lbf ft)
D	45 (33)

Dismantling and Assembly

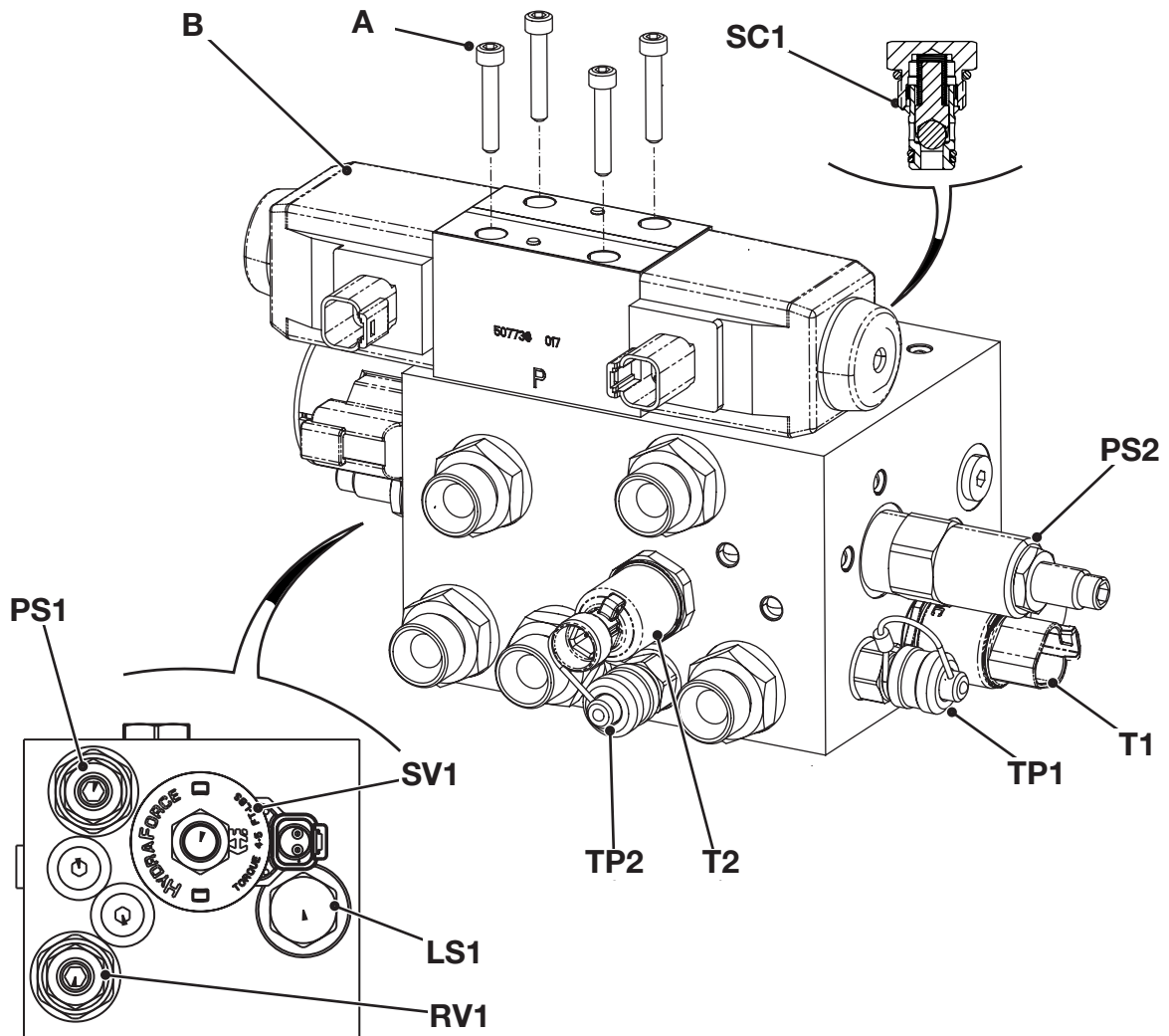


Fig 49.

C074720

Dismantling

Unscrew capscrews **A** to remove solenoid valve **B**.

Remove valve cartridges **LS1**, **PS1**, **PS2**, **RV1**, **SC1** and **SV1** as required for cleaning and/or re-sealing.