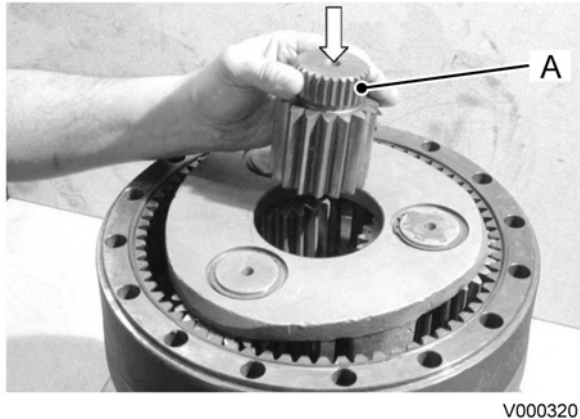


**Fig 24.**

- c Insert a NEW O-ring seal **A** into its seat in the top of the ring gear **B**.

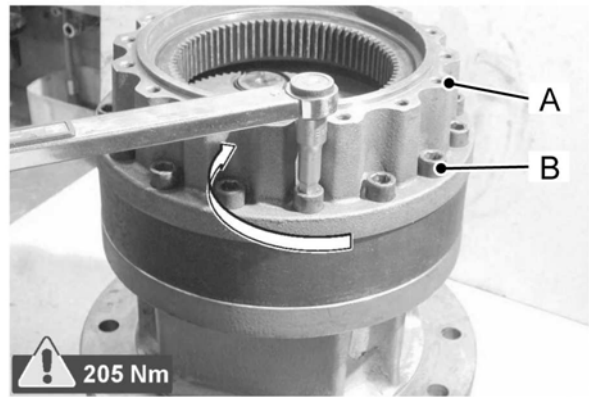
- 7 Insert the 2nd reduction sun gear **A**



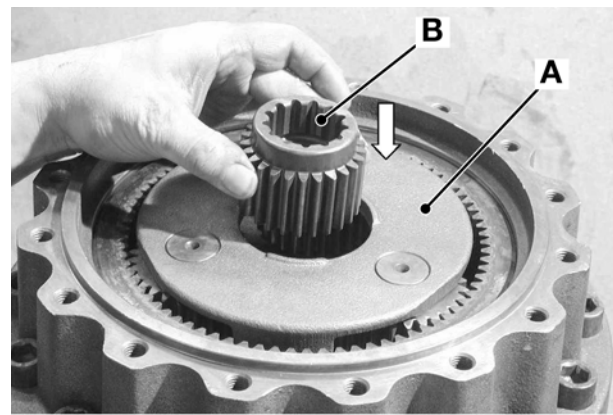
**Fig 25.**

- 8 Refit gearbox top section.

- a Fit the gearbox top section **A** onto the ring gear and insert socket head bolts **B** and torque tighten to 205Nm.

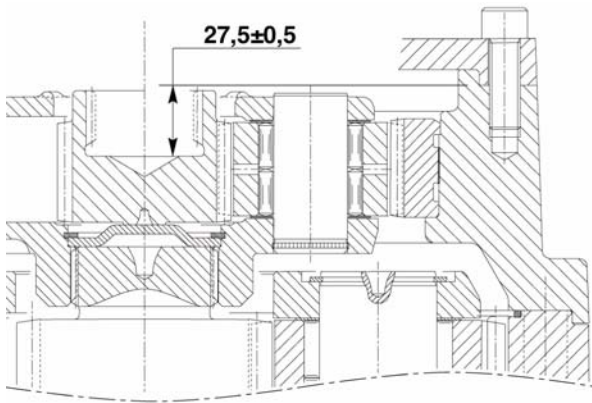


**Fig 26.**



**Fig 27.**

- 9 Fit the 1st reduction planet gear set **A**.
- 10 Fit the 1st reduction sun gear **B**.
- 11 Before fitting the slew motor to the gearbox check dimension below to indicate correct assembly of the gearbox. [⇒ Fig 28. \(□ E-227\)](#).



**Fig 28.**

**12** If the dimension is incorrect adjust using the following procedure.

**a** With a higher value :

Reduce the width of the 1st reduction sun gear **B** in the axial direction flattening the support plate (reduction side).

**b** With a lower value :

Introduce adjusting spacers between the 1st reduction solar gear **B** and the 1st reduction planet gear set **A**.

## Dismantling and Assembly - JS330/360

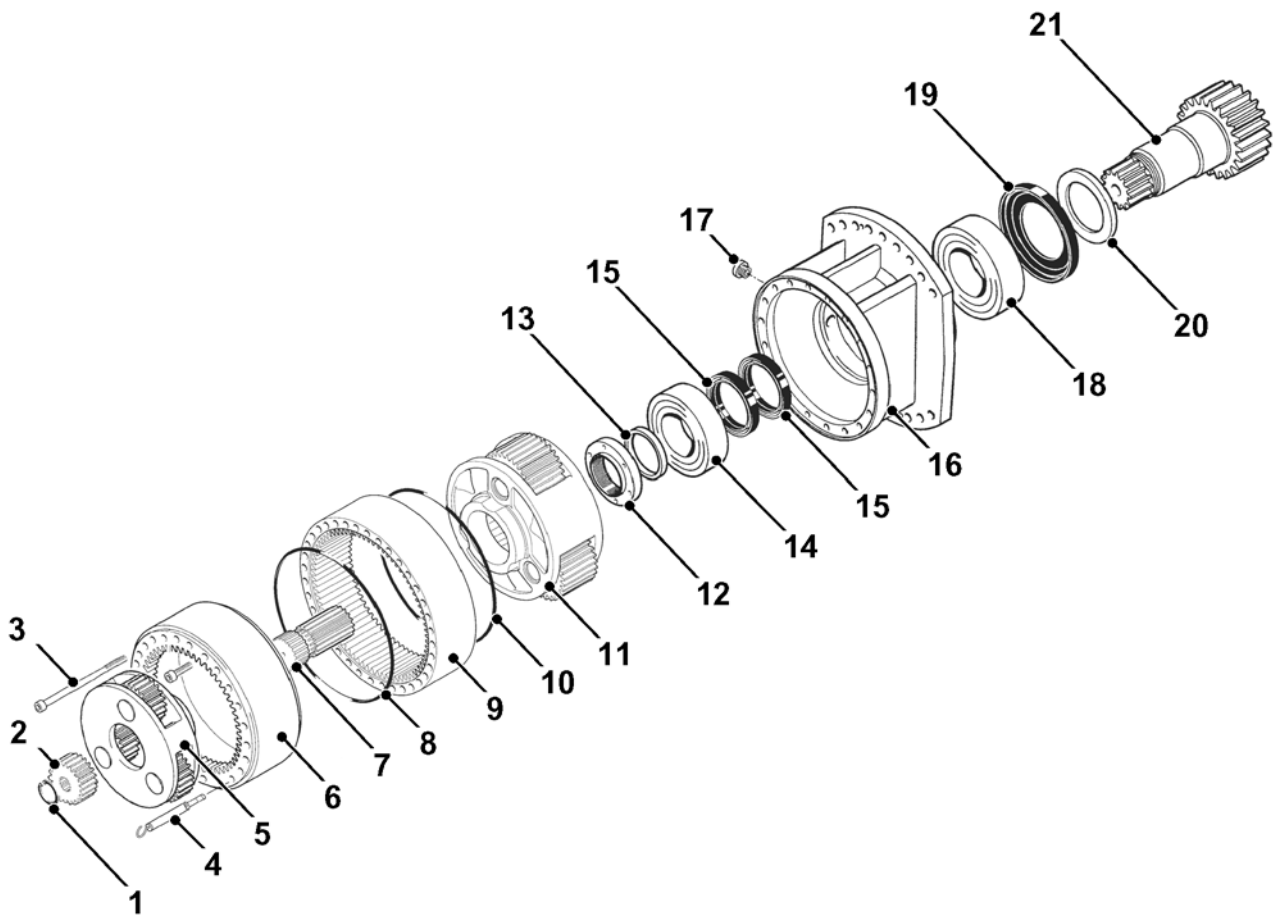


Fig 29.

C068760

### Component Identification

1	Circlip	8	O-ring	15	Seal ring
2	1st Reduction Sun Gear	9	Ring gear	16	Gearbox housing
3	Bolt	10	O-ring	17	Drain plug
4	Oil breather and level plug	11	2nd Reduction planet gear	18	Bearing
5	1st Reduction planet gear	12	Ring nut	19	Nylon ring
6	Cover	13	Spacer	20	Spacer
7	2nd Reduction sun gear	14	Bearing	21	Pinion shaft