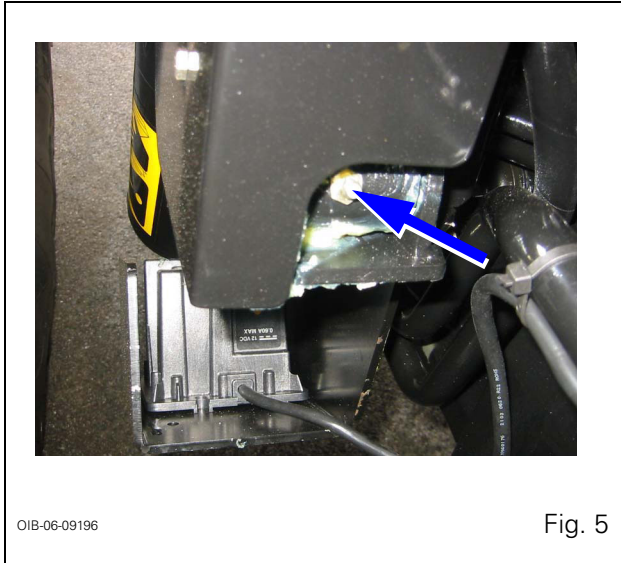
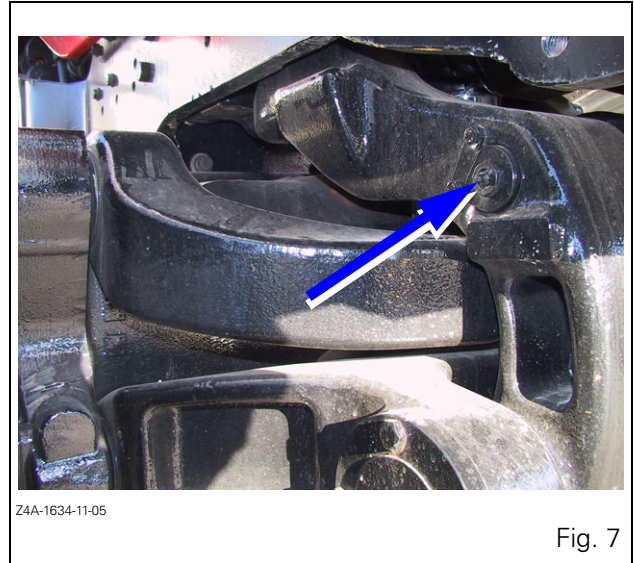


5 . SERVICING AND ADJUSTMENTS

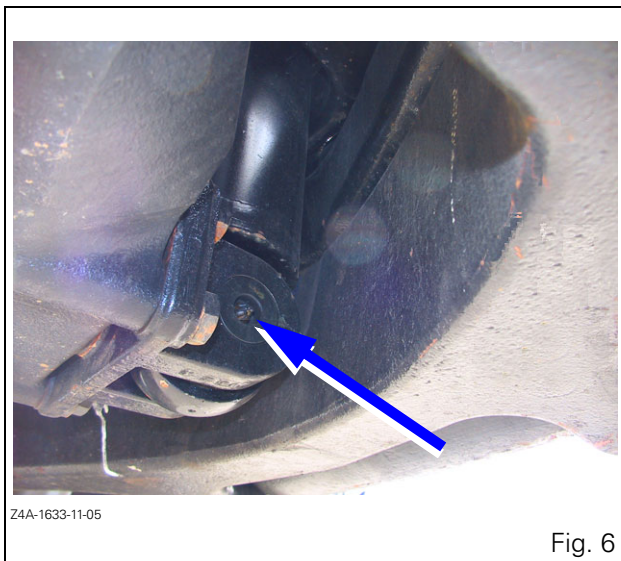
5. ParkLock ram (1 grease nipple)



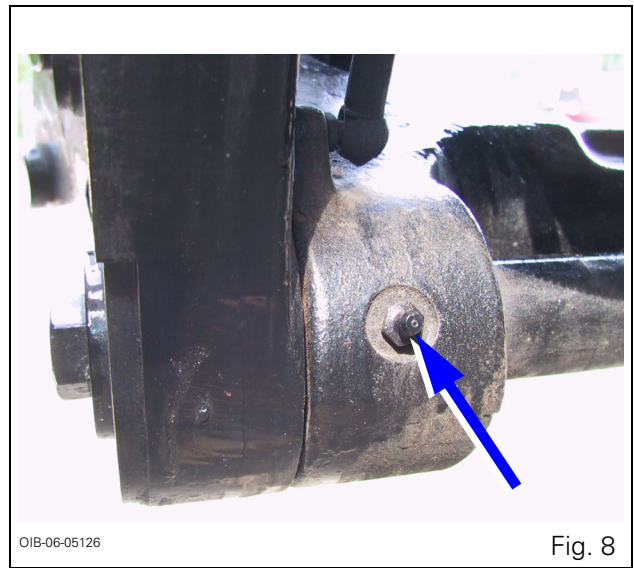
7. Upper front suspension pivot 4WD (1 grease nipple)



6. Lower cylinder pivot on suspended front axle 4WD (1 grease nipple).



8. Lower arm joints on front linkage (2 x 1 grease nipple)

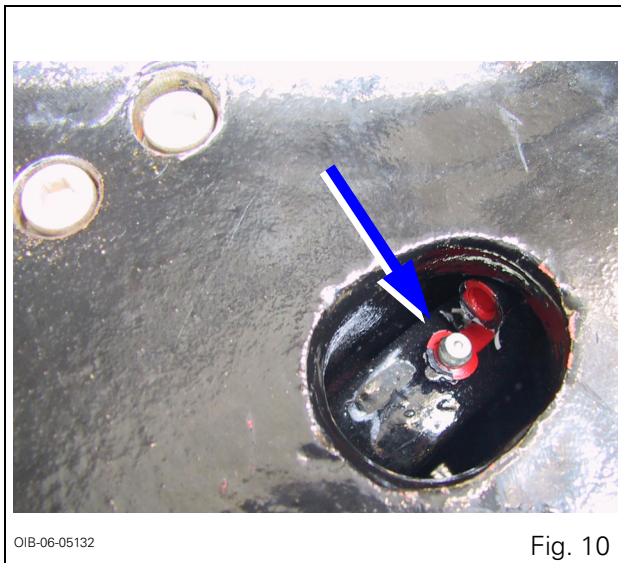
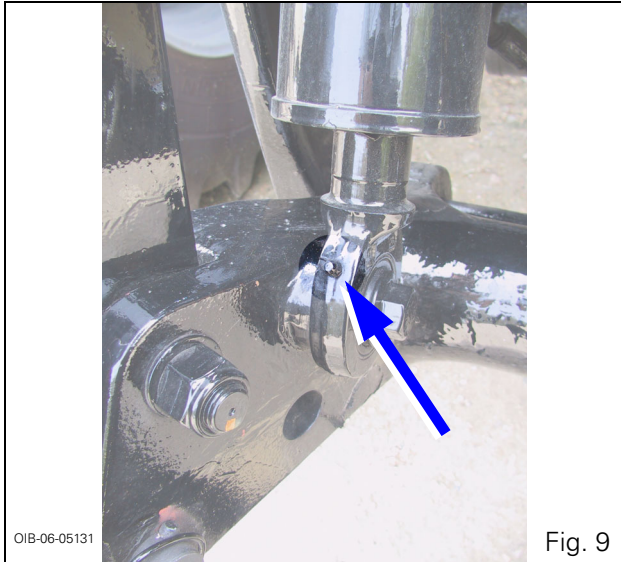


5 . SERVICING AND ADJUSTMENTS

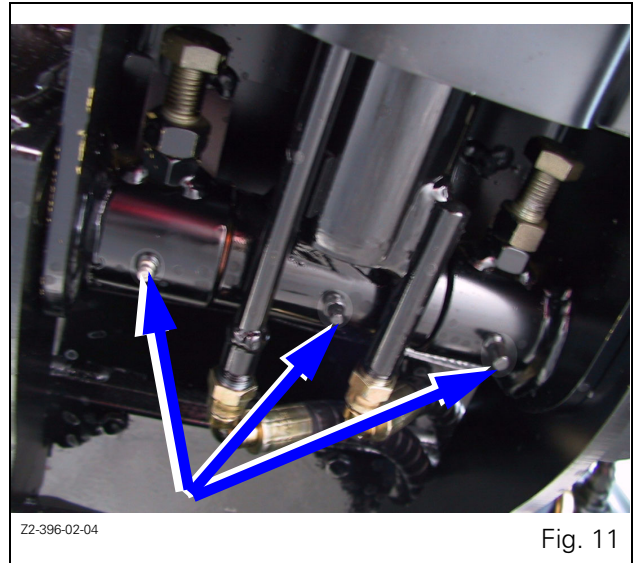
9. Lift rams (2 x 1 lower grease nipple (Fig. 9) and 2 x 1 upper grease nipple (Fig. 10) (accessible after opening bonnet))

During extended storage, ram rods should not come into contact with the air (risk of corrosion and subsequent leakage).

Rams should be fully retracted or greased.



10. Front linkage top link (threaded part)
11. Dromone hook joints (3 grease nipples)



12. Front PTO shaft

Lubricate the PTO shaft regularly to protect it from corrosion and assist implement hitching.

Every 400 hours:

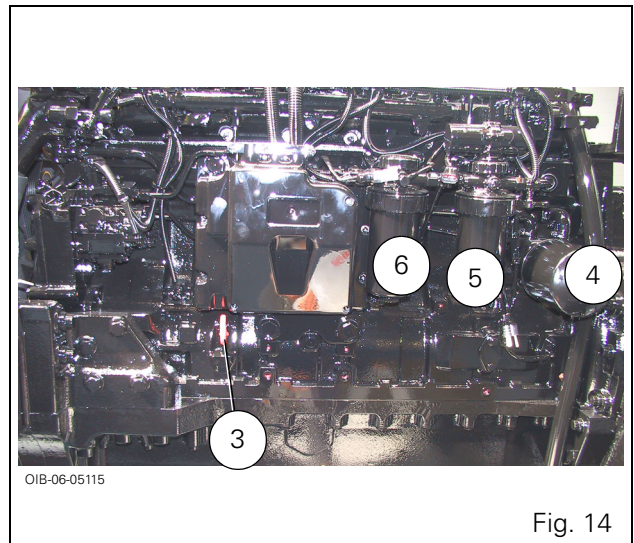
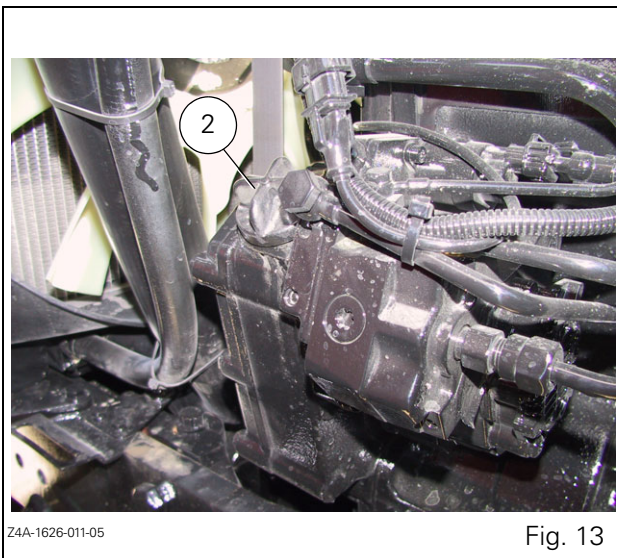
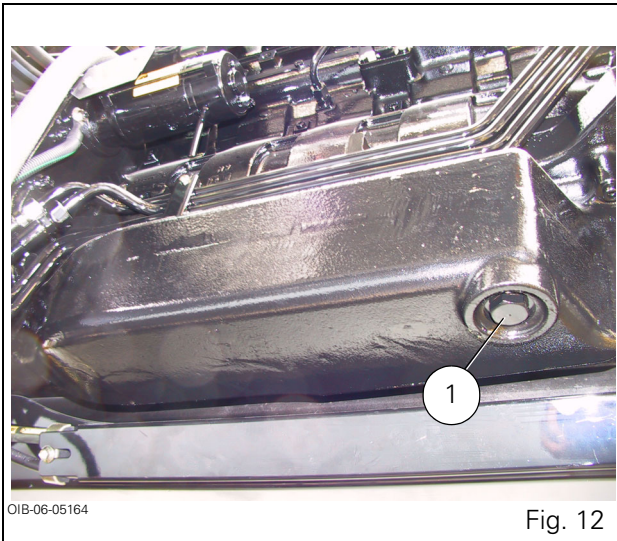
13. Cab

Lubricate the cab door hinges and the door and window locks with liquid paraffin.

5.7 - ENGINE

5.7.1 - 6-cylinder Sisu engine

1. Engine oil drain plug (Fig. 12)
2. Engine oil filler plug (Fig. 13)
3. Engine oil dipstick (Fig. 14)
4. Oil filter (Fig. 14)
5. Fuel prefilter (Fig. 14)
6. Fuel filter (Fig. 14)
7. Windscreen washer bottle (Fig. 15)



5.7.2 - Oil level

IMPORTANT: Stand the tractor on level ground, with the front axle suspension disengaged.

Check the engine oil level every ten hours or daily (variable frequency).

To avoid unnecessarily heavy oil consumption:

- Do not exceed the MAX mark on the dipstick.
- Do not refill until the level reaches the MIN mark on the dipstick.

Top up if necessary.