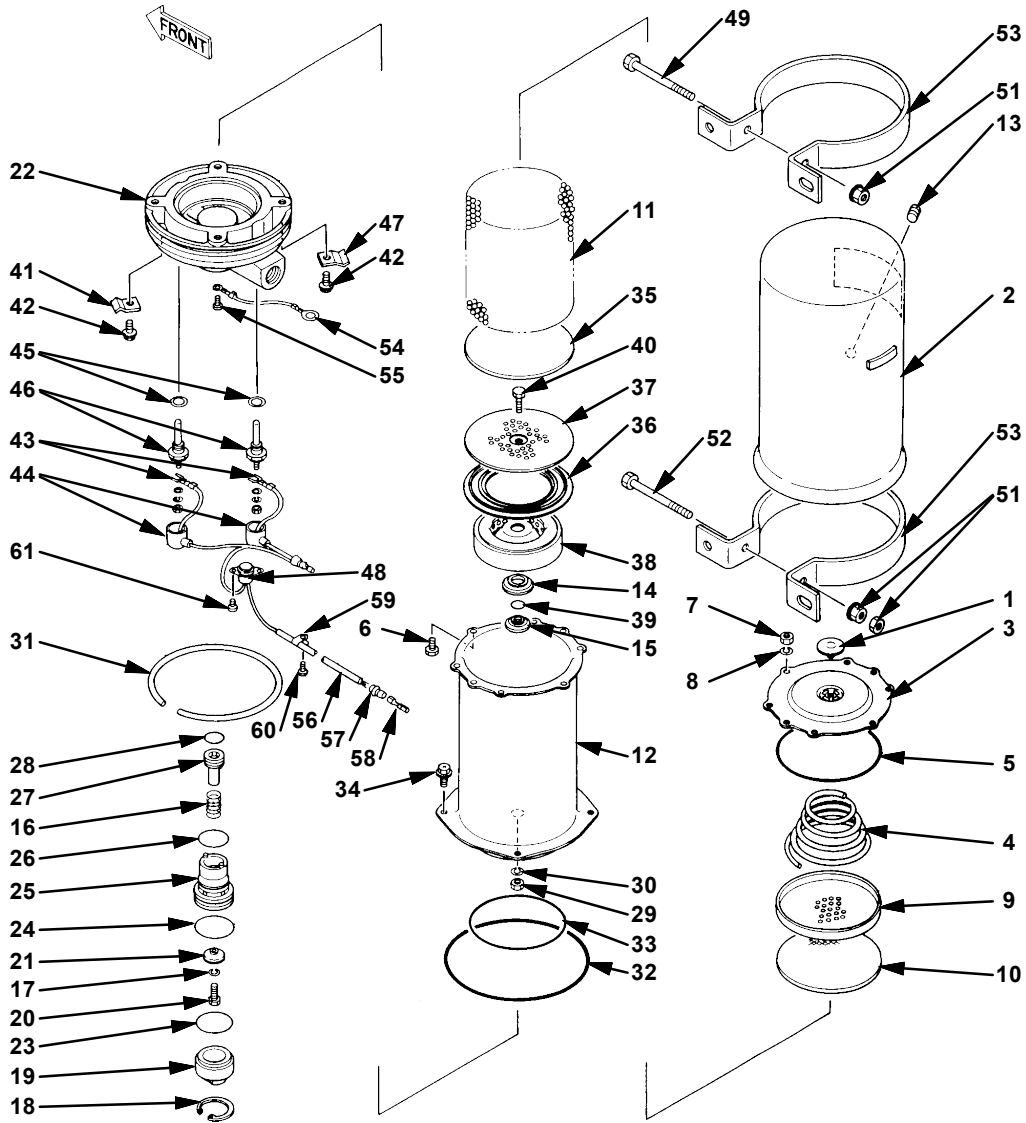


# UPPERSTRUCTURE / Air Drier

## DISASSEMBLE AIR DRIER



- |                         |                     |                    |                     |
|-------------------------|---------------------|--------------------|---------------------|
| 1 - Check Valve         | 17 - Spring Washer  | 32 - O-Ring        | 47 - Stopper Plate  |
| 2 - Exhaust Gas Chamber | 18 - Retaining Ring | 33 - O-Ring        | 48 - Thermostat     |
| 3 - Case Cover          | 19 - Exhaust Body   | 34 - Screw, Washer | 49 - Bolt           |
| 4 - Set Spring          | 20 - Bolt           | 35 - Oil Filter    | 50 - Spring Washer  |
| 5 - O-Ring              | 21 - Valve          | 36 - Gasket Ring   | 51 - Nut            |
| 6 - Bolt                | 22 - Driver         | 37 - Filter Plate  | 52 - Bolt           |
| 7 - Nut                 | 23 - O-Ring         | 38 - Filter        | 53 - Bracket        |
| 8 - Spring Washer       | 24 - O-Ring         | 39 - O-Ring        | 54 - Wire Harness   |
| 9 - Filter Plate        | 25 - Valve Hosing   | 40 - Bolt          | 55 - Screw          |
| 10 - Filter             | 26 - O-Ring         | 41 - Stopper Plate | 56 - Cord Cover     |
| 11 - Desiccant          | 27 - Piston         | 42 - Bolt, Washer  | 57 - Terminal Cover |
| 12 - Case               | 28 - O-Ring         | 43 - Terminal      | 58 - Terminal       |
| 13 - Plug               | 29 - Nut            | 44 - Heater Boot   | 59 - Cord Clamp     |
| 14 - Gasket Ring        | 30 - Spring Washer  | 45 - Gasket        | 60 - Screw          |
| 15 - Spacer             | 31 - Stopper Ring   | 46 - Heater        | 61 - Screw          |

W115-02-07-050