




UNDERCARRIAGE / Center Joint


Removal


1. Attach an identification tag to each hose to aid re-assembly. Disconnect hoses (1, 2, and 4 to 15) and their adapters.


 : 22 mm


 : 39 N·m (4.0 kgf·m, 29 lbf·ft)


 : 27 mm

 : 93 N·m (9.5 kgf·m, 69 lbf·ft)

 : 36 mm


 : 175 N·m (18 kgf·m, 130 lbf·ft)


 : 41 mm

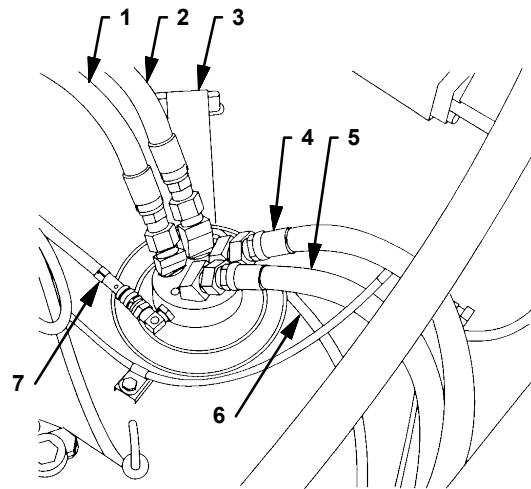
 : 205 N·m (21 kgf·m, 152 lbf·ft)

 **NOTE:** Cap all disconnected hose ends.

2. Loosen bolts to remove lock plate (4).

 : 22 mm

 : 135 N·m (14 kgf·m, 101 lbf·ft)




M162-07-071


3. Install eye bolts (PF1) to the center joint and attach a wire rope.

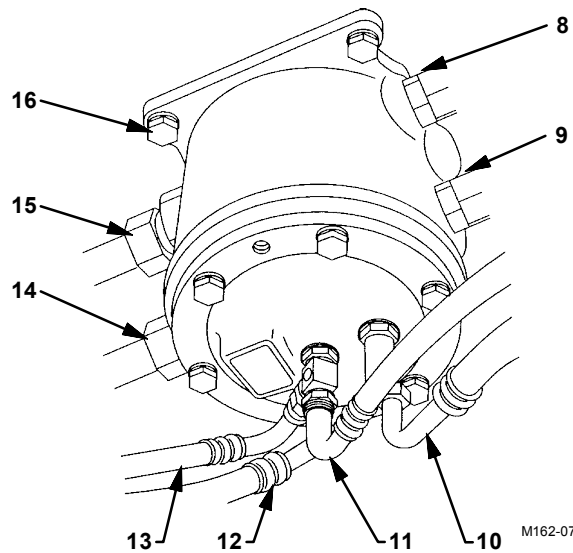


CAUTION: Center joint weight: 77 kg (180 lb)

4. Remove bolts (16) to remove the center joint using a crane.

 : 24 mm

 : 205 N·m (21 kgf·m, 152 lbf·ft)



M162-07-067

Installation

1. Install the center joint with bolts (16).
2. Connect hoses (1, 2, and 4 to 15) and adapters.
3. Install lock plate (3) with bolts.