



UNDERCARRIAGE / Center Joint


Installation


1. Install washers onto bolts (12) (4 used) separately and install the center joint with the bolts.


 : 17 mm


 : 50 N·m (5.1 kgf·m, 37 lbf·ft)

2. Connect hoses (5 to 11, 13 to 23) to the center joint.


 : 19 mm


 : 30 N·m (3.1 kgf·m, 22.5 lbf·ft)

 : 22 mm

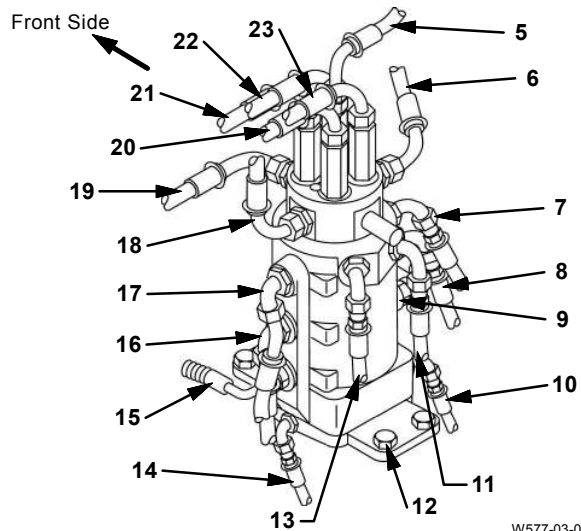
 : 40 N·m (4.1 kgf·m, 29.5 lbf·ft)

3. Install lock washers (3) (4 used) and washers (4) (4 used) onto bolts (2) (4 used) and secure under cover (1) with the bolts.

 : 17 mm

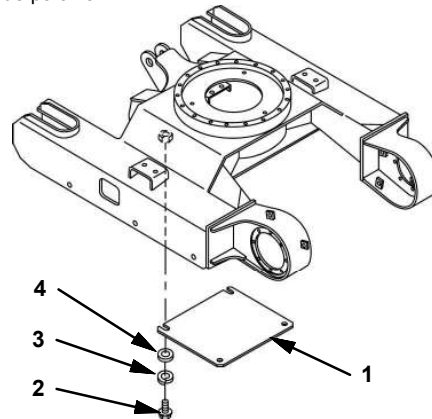
 : 50 N·m (5.1 kgf·m, 37 lbf·ft)

IMPORTANT: Be sure to check the hydraulic oil lever after assembling. Start the engine to check each part for any oil leakage.



W577-03-03-003

- 5 - Hose CT: Port H, to hydraulic oil tank
- 6 - Hose B9: Port A, from control valve blade lower side port B9
- 7 - Hose F: Port F, to right travel device port P2
- 8 - Hose D: Port D, to right travel device port P1
- 9 - Hose B: Port B, to blade cylinder rod side
- 10 - Hose DR: Port H, to right travel device port T2
- 11 - Hose G: Port G, to right travel device port Ps
- 12 - Center joint mounting bolts (4 used)
- 13 - Hose G: Port G, to left travel device port Ps
- 14 - Hose DR: Port G, to left travel device port T1
- 15 - Hose A: Port A, to blade cylinder bottom side
- 16 - Hose C: Port C, to left travel device port P2
- 17 - Hose E: Port E, to left travel device port P1
- 18 - Hose A9: Port B, from control valve blade raise side port A9
- 19 - Hose G: Port G, to solenoid valve port A
- 20 - Hose B4: Port D, from control valve travel right reverse side port B4
- 21 - Hose A4: Port F, from control valve travel right forward side port A4
- 22 - Hose B3: Port C, from control valve travel left reverse side port B3
- 23 - Hose A3: Port E, from control valve travel left forward side port A3



W577-03-03-004