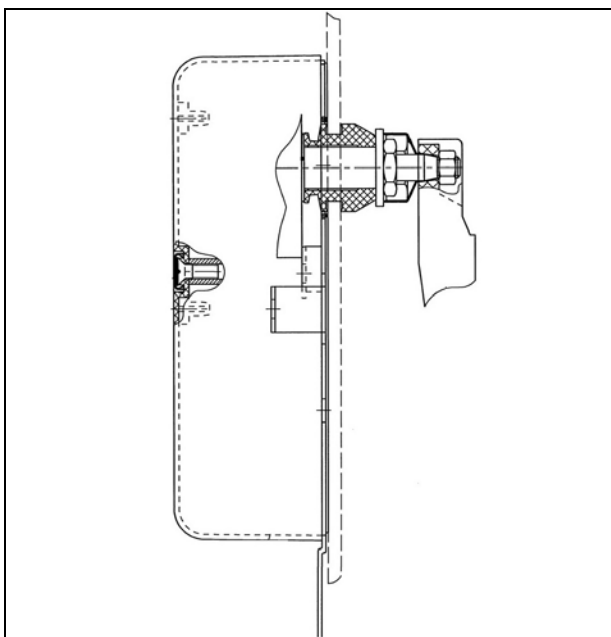


1001899

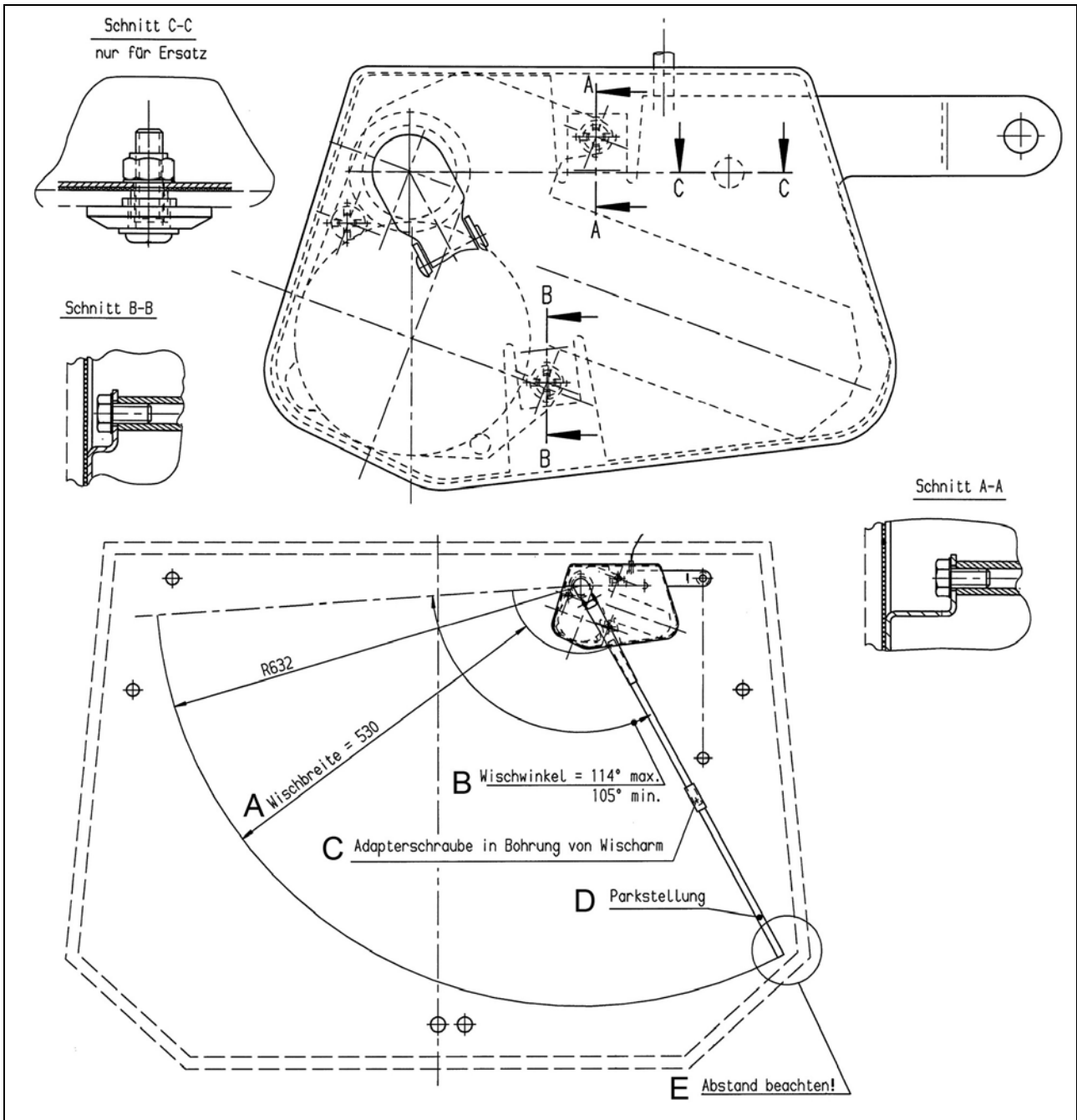
Assembly Instructions

Item	Designation	Item	Designation
1	CAP	21	HEX NUT M16X1
2	COUNTERSUNK SCREW M6X16-4.8A3L	23	SPACER
4	COVER	24	WASHER SEAL
5	BASE PLATE	25	CAP
6	RUBBER PLATE	26	M8 HEX NUT
7	SPRING WASHER 6-A3L	30	WIPER ARM
8	HEX SCREW M6X12-8.8A3L	31	WIPER BLADE
20	WIPER MOTOR	32	ADAPTER



1001902

- Mount rear windscreen wipers using the drawings and parts list as reference.



1001903

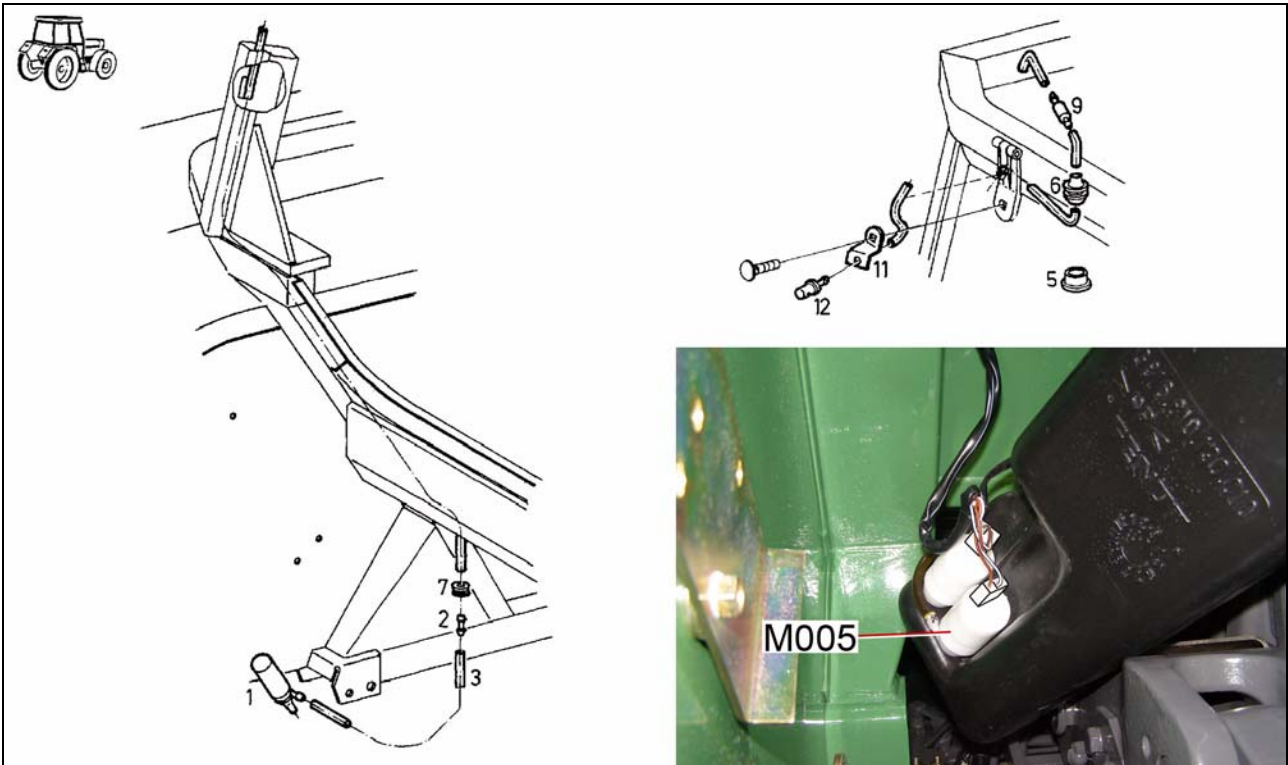


1001901

Adjustment instructions for wiper blade

- A = Wiper width
- B = Wiping angle
- C = Adapter screw in bore of wiper arm
- E = Observe distance
- D = Parking position

- Pull forward separation point (X258) behind roof lining, guide through grommet in cab roof and connect to wiper motor (M004).
- Fasten surplus separation point (arrowed) using cable tie.



1001900

Assembly Instructions

Item	Designation	Item	Designation
1	PUMP	7	CABLE BUSHING 9X12X16
2	COUPLINGS	9	NON-RETURN VALVE
3	HOSE 5X1.5 2400 MM CUT TO LENGTH	11	BRACKET
5	PLUG, NOT REQUIRED WITH WIND-SCREEN WASHER	12	DOUBLE NOZZLE
6	GROMMET		



1001905

- Mount rear windscreen washer completely.
- Attach separating point to rear wiper pump (M005).