

## CHECK VALVE LIFT

*NOTE: Measuring valve lift can give an indication of wear on camshaft lobes and cam followers or bent push rods.*

1. Remove rocker arm cover and loosen locknut on rocker arm. Set valve clearance at 0.00 mm (in.). Tighten locknut.
2. Put dial indicator tip on valve rotator. Be sure that valve is fully closed.
3. Check pre-set on dial indicator. Set dial indicator pointer at zero.
4. Manually turn engine in running direction, using the engine rotation tools previously mentioned for checking valve clearance.
5. Observe dial indicator reading as valve is moved to fully open position. Compare readings with specifications given below.

### VALVE LIFT SPECIFICATION AT 0.00 MM (IN.) CLEARANCE

Engine Ser. No. ( —121169)

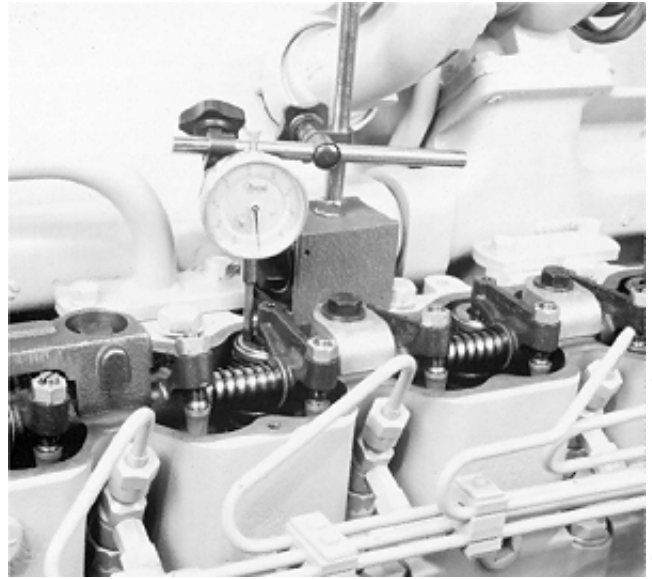
Intake . . . . .	14.05—14.48 mm (0.553—0.570 in.)
Minimum Acceptable . . . . .	13.16 mm (0.518 in.)
Exhaust . . . . .	15.88—16.31 mm (0.625—0.642 in.)
Minimum Acceptable . . . . .	14.99 mm (0.590 in.)

Engine Ser. No. (121170— ) and converted 644E Loaders

Intake . . . . .	13.39—13.84 mm (0.527—0.545 in.)
Minimum Acceptable . . . . .	12.50 mm (0.492 in.)
Exhaust . . . . .	14.38—14.84 mm (0.566—0.584 in.)
Minimum Acceptable . . . . .	13.49 mm (0.531 in.)

Replace camshaft, followers, and/or push rods as necessary if valve lift is not within specification.

6. Adjust valve clearance to specification. (See CHECK AND ADJUST VALVE CLEARANCE in Group 05.)



-UN-06DEC88  
RG5242

16  
6